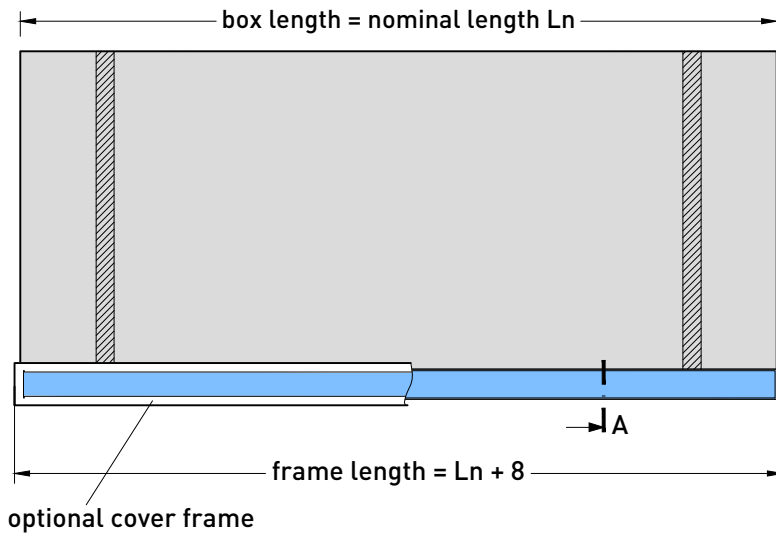
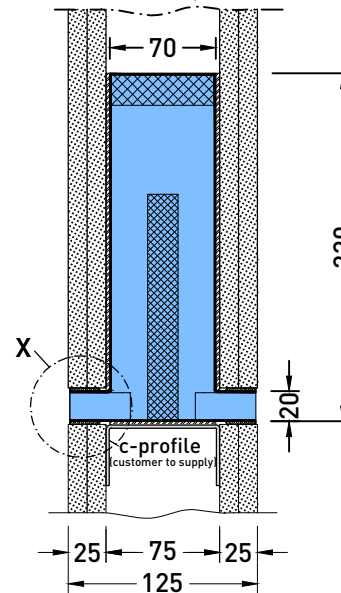


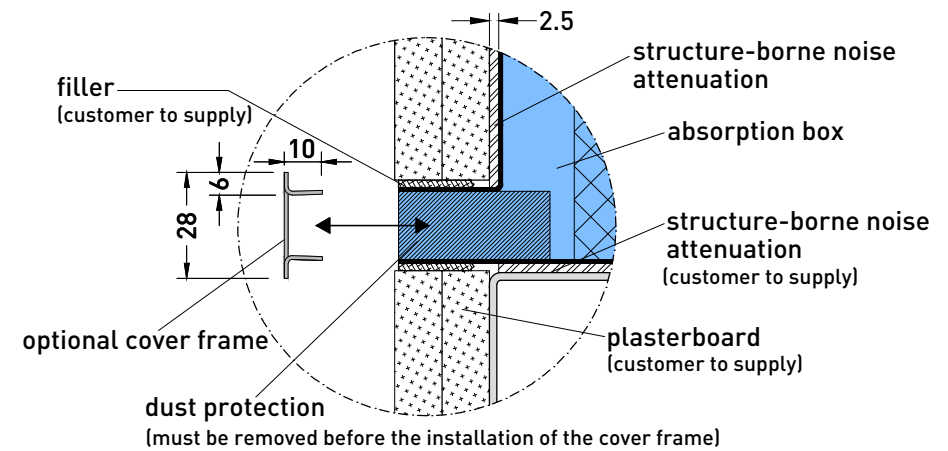
front view, scale 1:5



section A, scale 1:5



detail X, scale 1:2

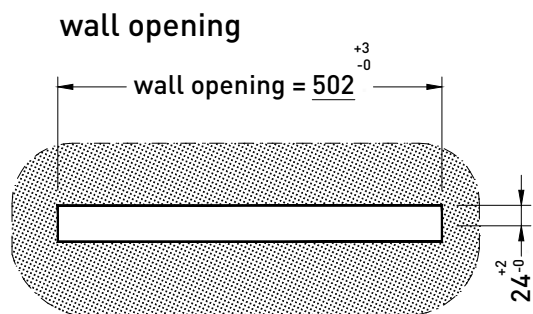


Installation note:

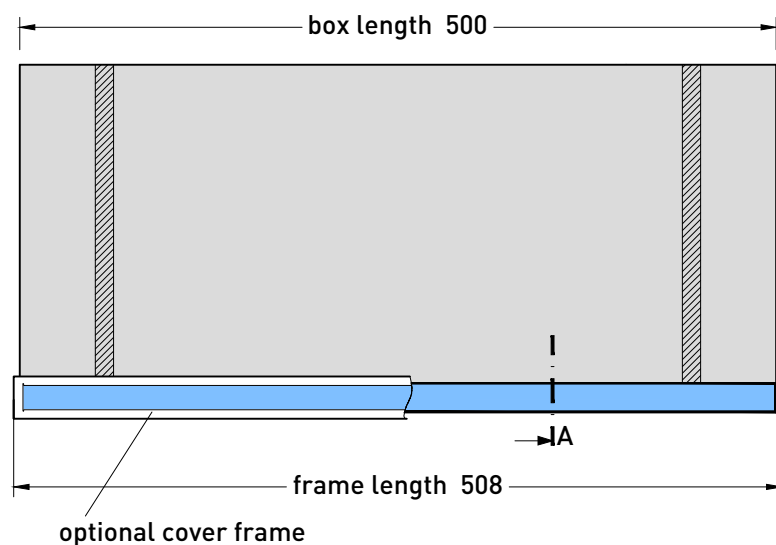
- The gap between the opening of the wall and the neck of the absorption box must not be closed with rigid materials. In order to avoid sound by-ways however, this crevice has to be closed with continuously flexible material.
- The provided dust protection has to be removed after the complete installation.

Transfer grille INDUSILENT

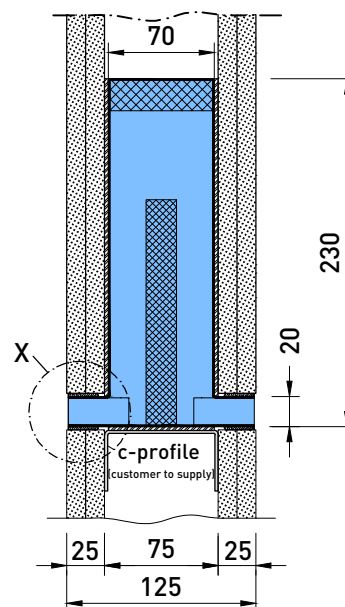
Type TG - installation in a plasterboard wall - height 230mm



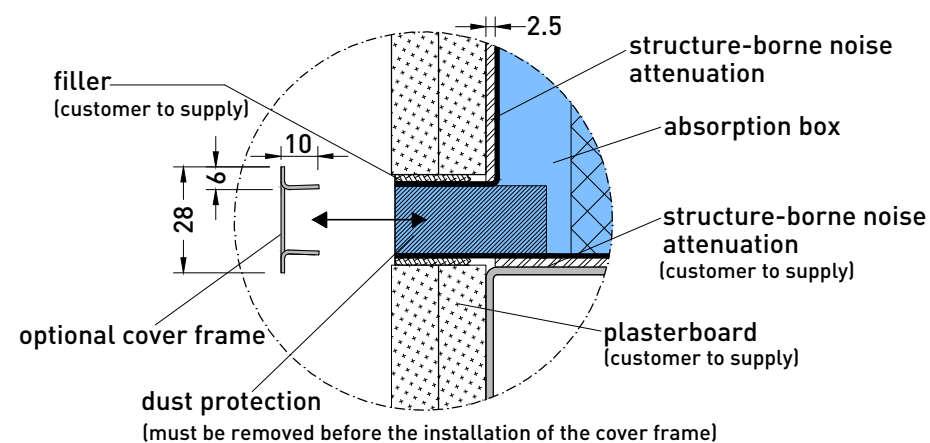
front view, scale 1:5



section A, scale 1:5



detail X, scale 1:2

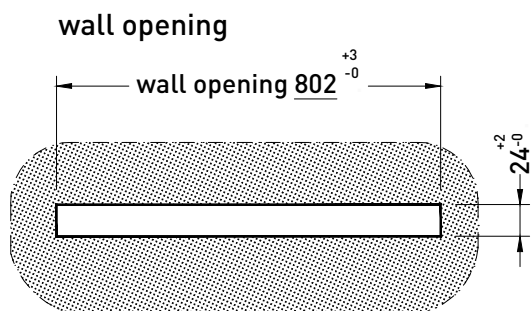


Installation note:

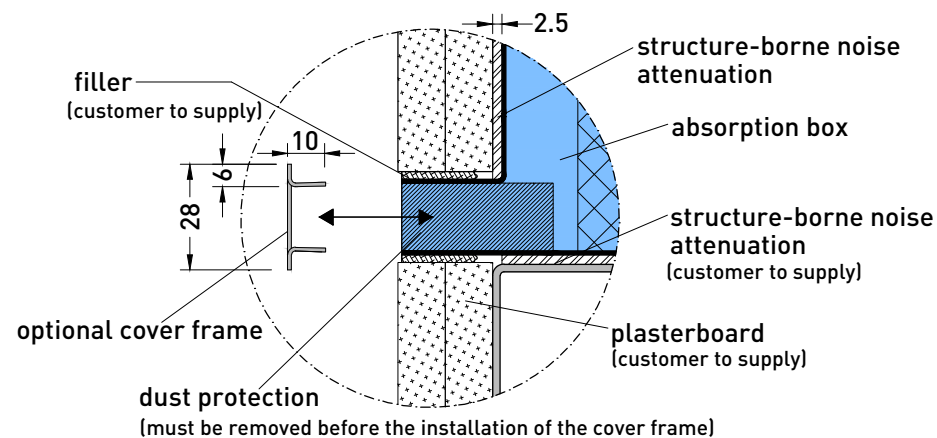
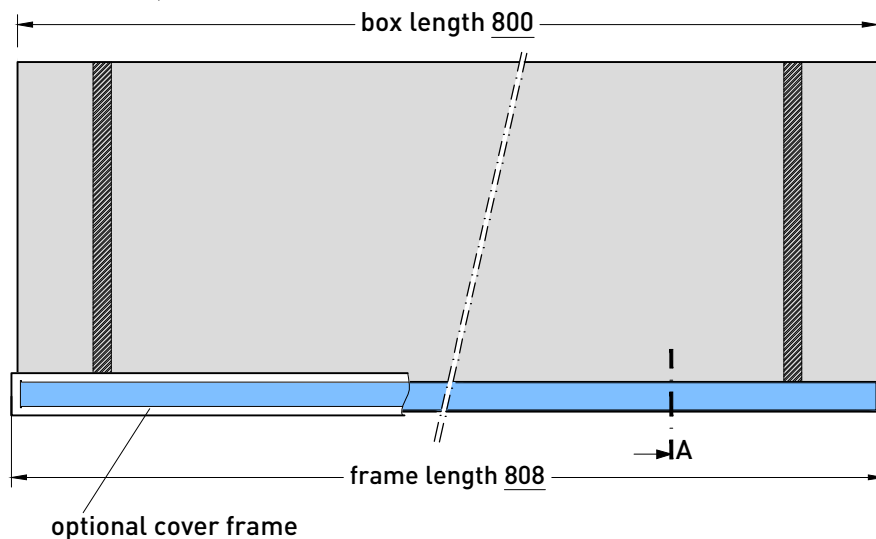
- The gap between the opening of the wall and the neck of the absorption box must not be closed with rigid materials. In order to avoid sound by-ways however, this crevice has to be closed with continuously flexible material.
- The provided dust protection has to be removed after the complete installation.

Transfer grille INDUSILENT

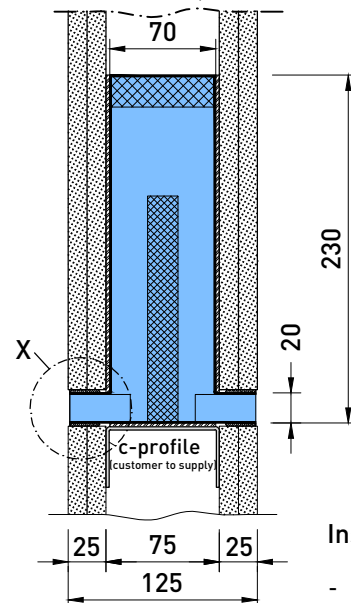
Type TG - installation in a plasterboard wall - nominal length 500mm - height 230mm



front view, scale 1:5



section A, scale 1:5

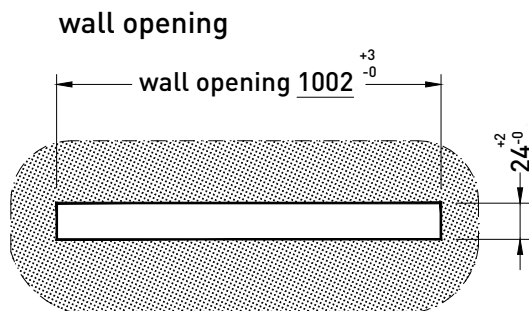


Installation note:

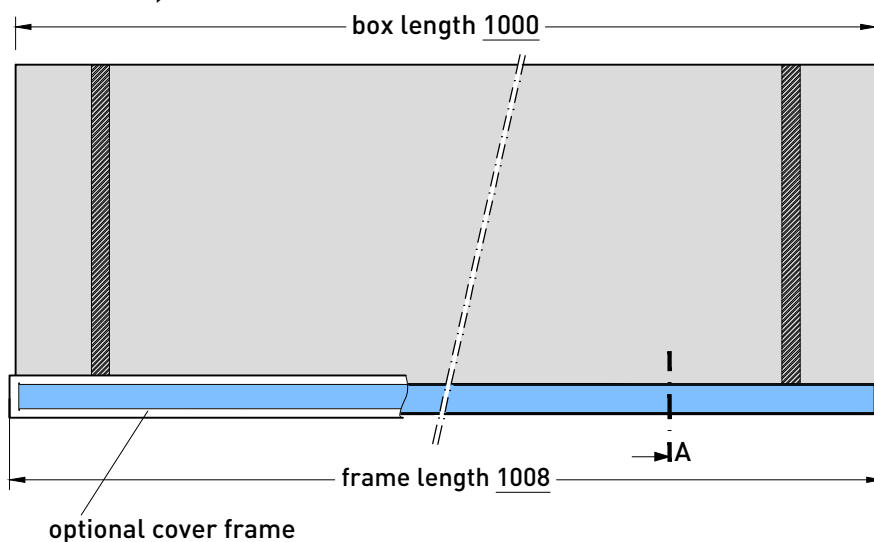
- The gap between the opening of the wall and the neck of the absorption box must not be closed with rigid materials. In order to avoid sound by-ways however, this crevice has to be closed with continuously flexible material.
- The provided dust protection has to be removed after the complete installation.

Transfer grille INDUSILENT

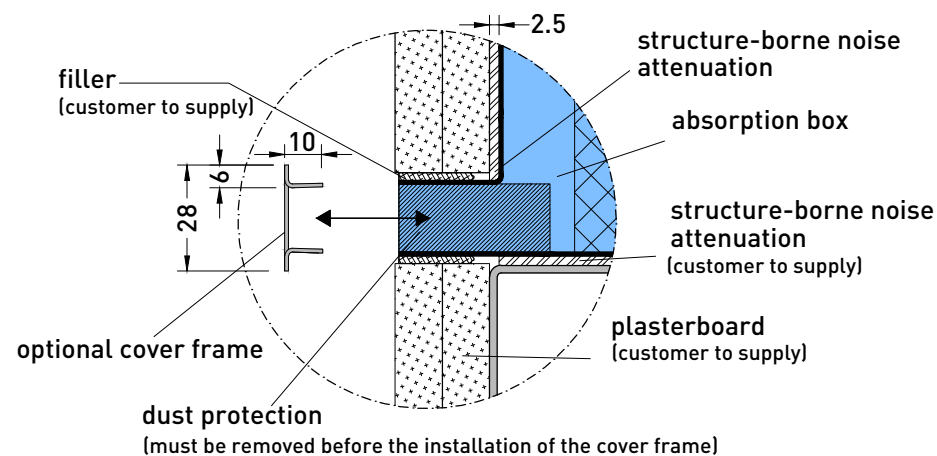
Type TG - installation in a plasterboard wall - nominal length 800mm - height 230mm



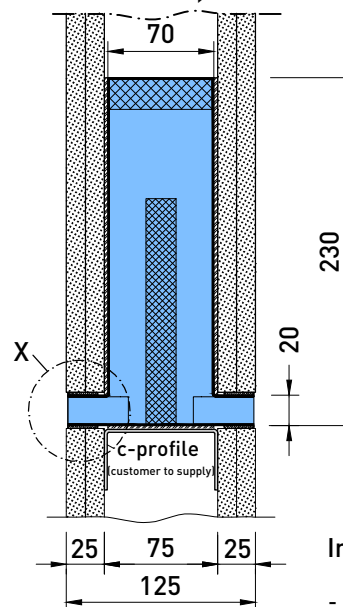
front view, scale 1:5



detail X, scale 1:2



section A, scale 1:5

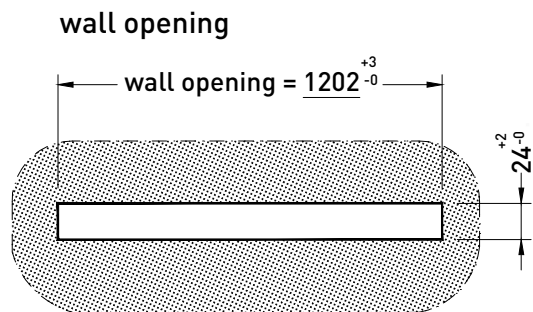


Installation note:

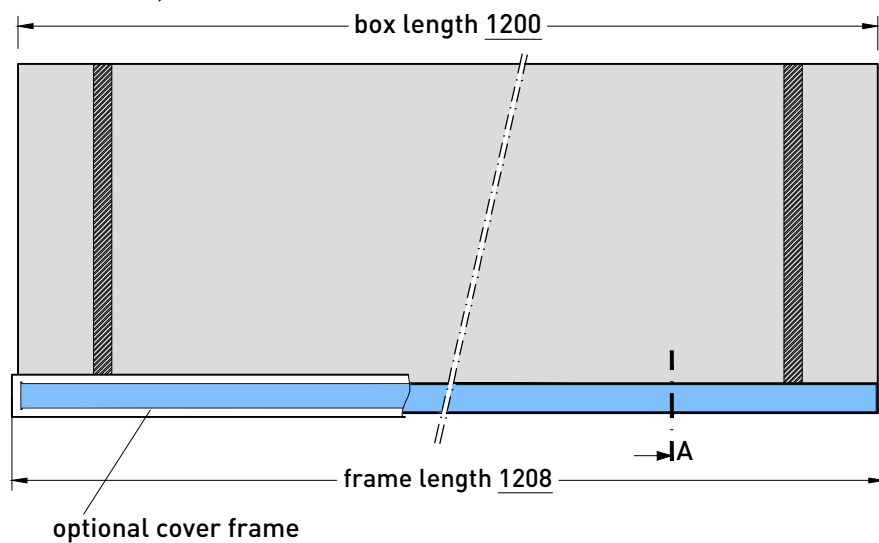
- The gap between the opening of the wall and the neck of the absorption box must not be closed with rigid materials. In order to avoid sound by-ways however, this crevice has to be closed with continuously flexible material.
- The provided dust protection has to be removed after the complete installation.

Transfer grille INDUSILENT

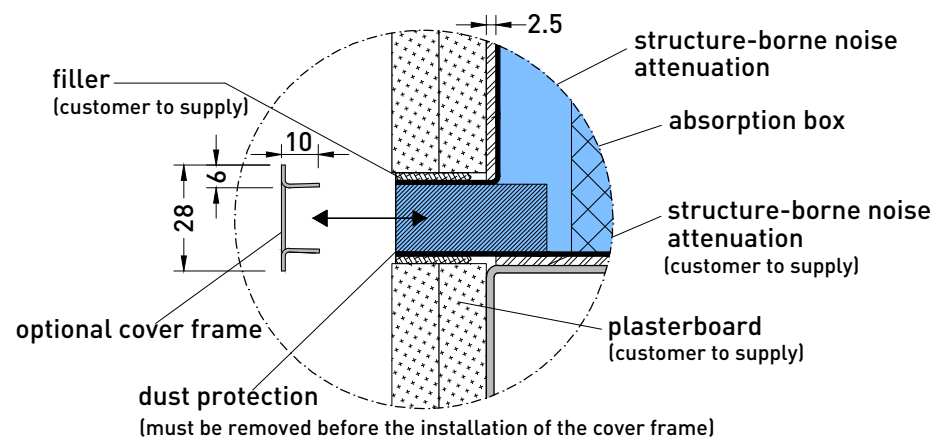
Type TG - installation in a plasterboard wall - nominal length 1000mm - height 230mm



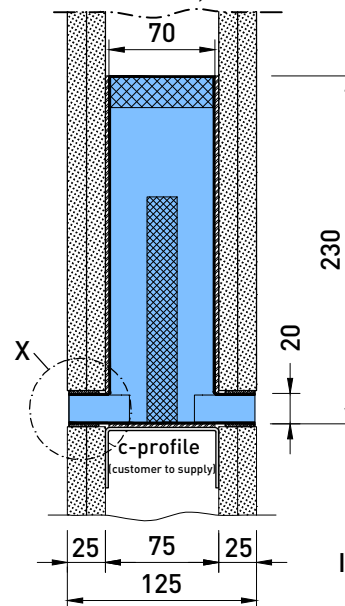
front view, scale 1:5



detail X, scale 1:2



section A, scale 1:5



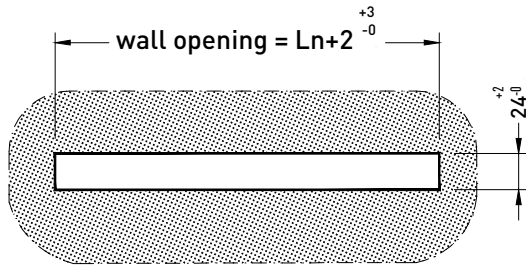
Installation note:

- The gap between the opening of the wall and the neck of the absorption box must not be closed with rigid materials. In order to avoid sound by-ways however, this crevice has to be closed with continuously flexible material.
- The provided dust protection has to be removed after the complete installation.

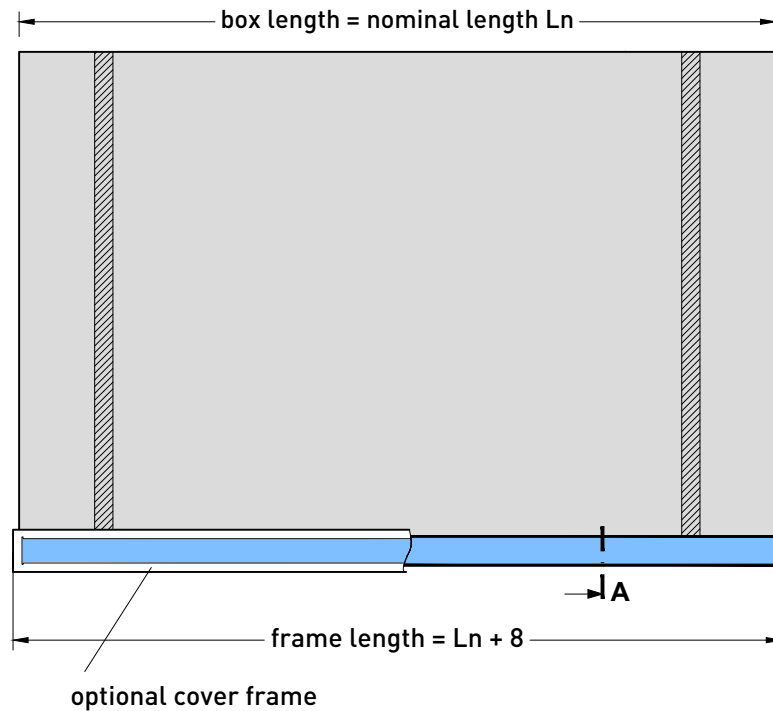
Transfer grille INDUSILENT

Type TG - installation in a plasterboard wall - nominal length 1200mm - height 230mm

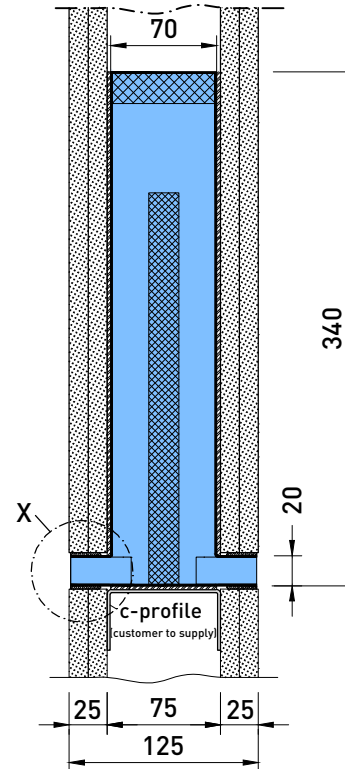
wall opening



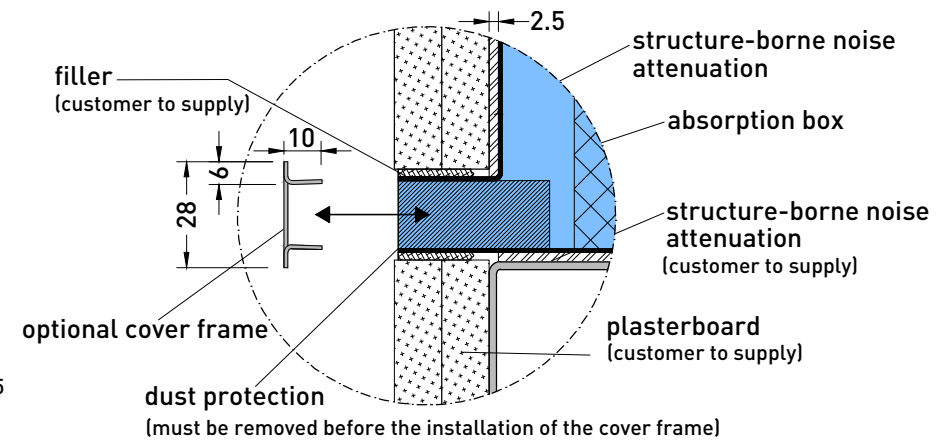
front view, scale 1:5



section A, scale 1:5



detail X, scale 1:2

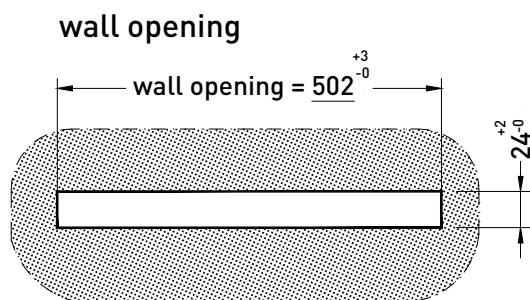


Installation note:

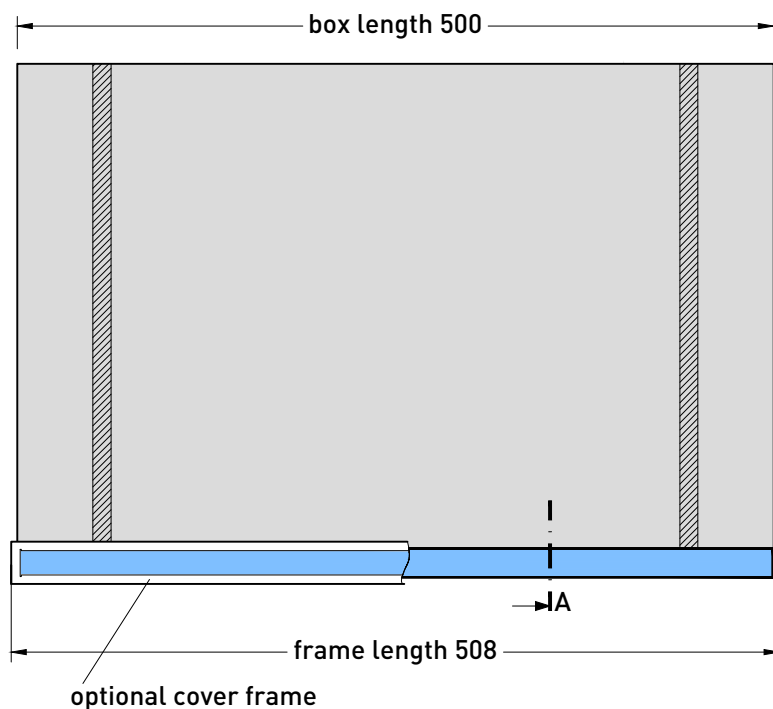
- The gap between the opening of the wall and the neck of the absorption box must not be closed with rigid materials. In order to avoid sound by-ways however, this crevice has to be closed with continuously flexible material.
- The provided dust protection has to be removed after the complete installation.

Transfer grille INDUSILENT

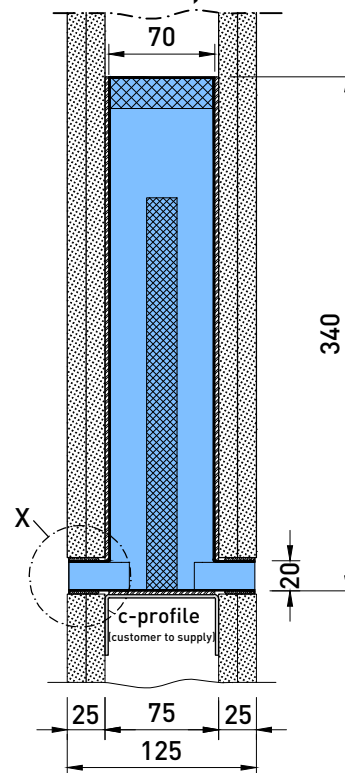
Type TG - installation in a plasterboard wall - height 340mm



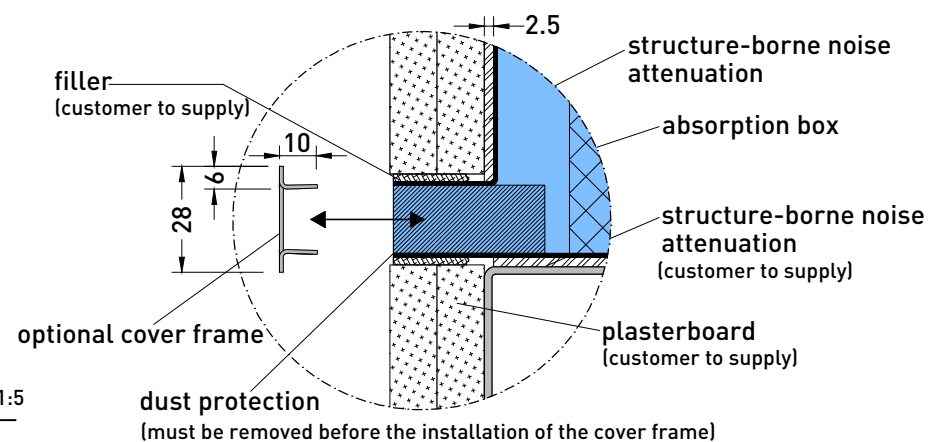
front view, scale 1:5



section A, scale 1:5



detail X, scale 1:2



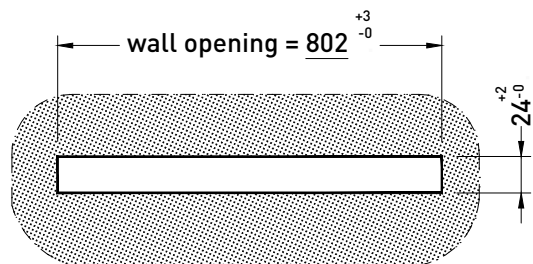
Installation note:

- The gap between the opening of the wall and the neck of the absorption box must not be closed with rigid materials. In order to avoid sound by-ways however, this crevice has to be closed with continuously flexible material.
- The provided dust protection has to be removed after the complete installation.

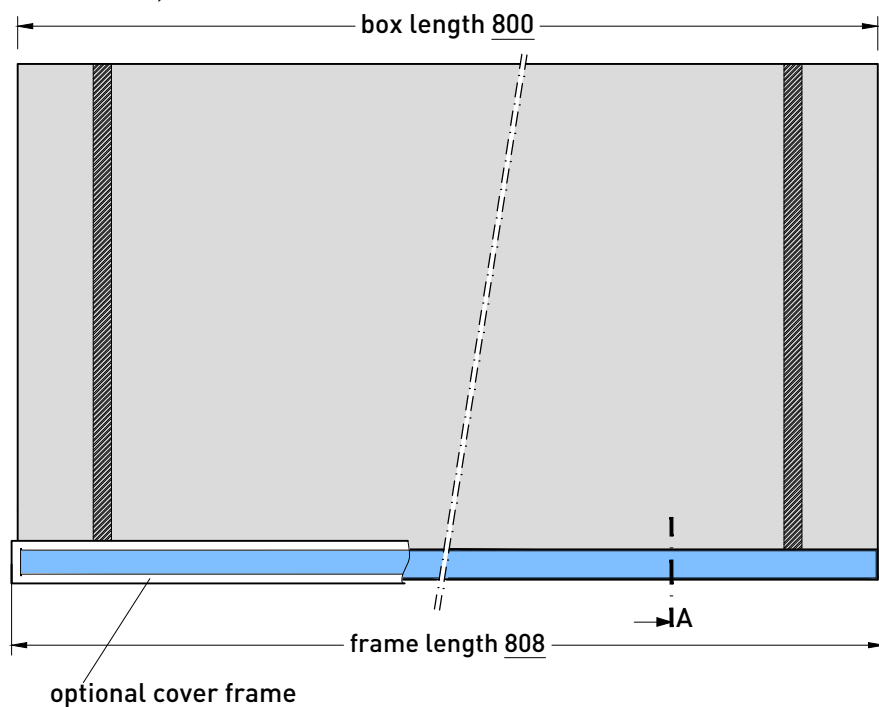
Transfer grille INDUSILENT

Type TG - installation in a plasterboard wall - nominal length 500mm - height 340mm

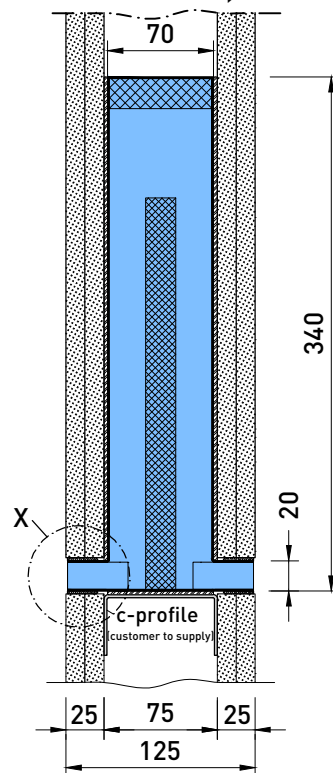
wall opening



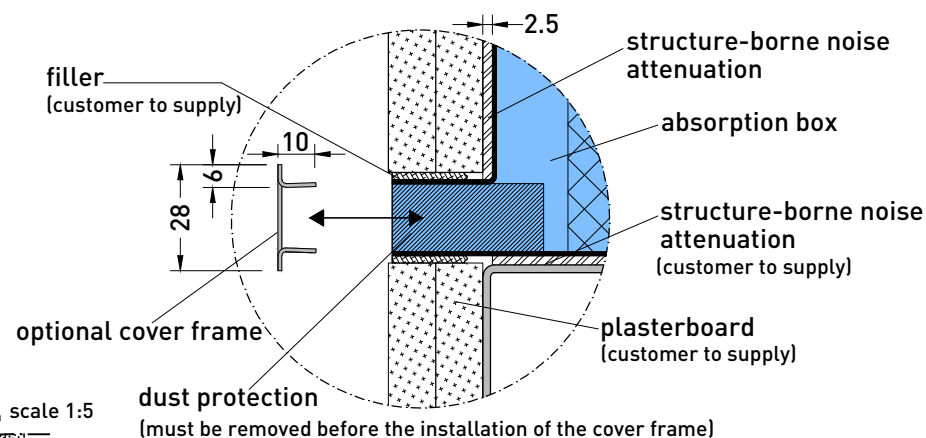
front view, scale 1:5



section A, scale 1:5



detail X, scale 1:2

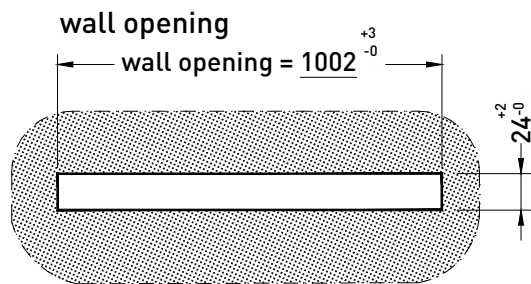


Installation note:

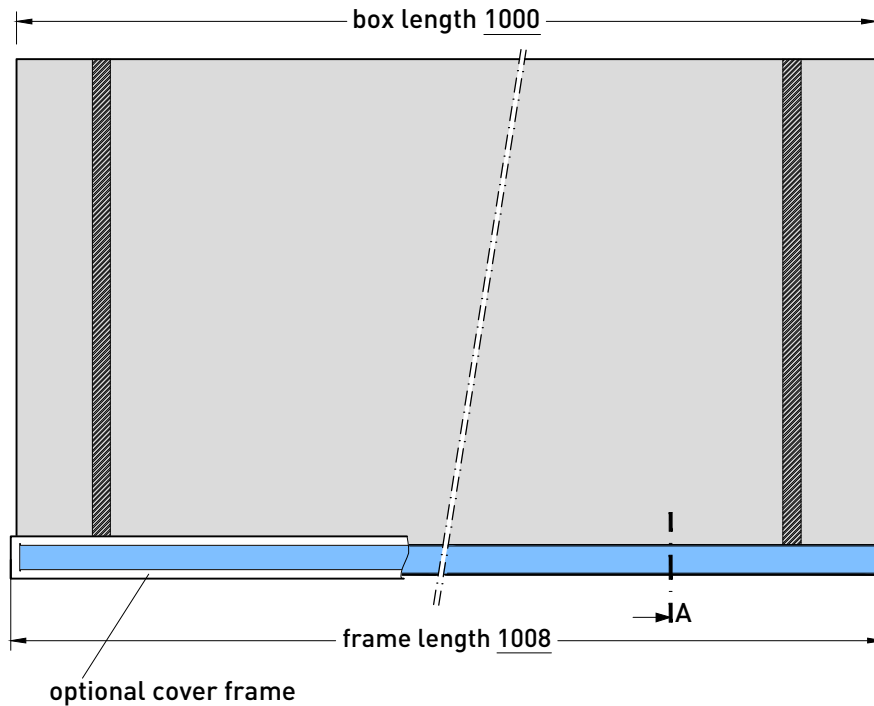
- The gap between the opening of the wall and the neck of the absorption box must not be closed with rigid materials. In order to avoid sound by-ways however, this crevice has to be closed with continuously flexible material.
- The provided dust protection has to be removed after the complete installation.

Transfer grille INDUSILENT

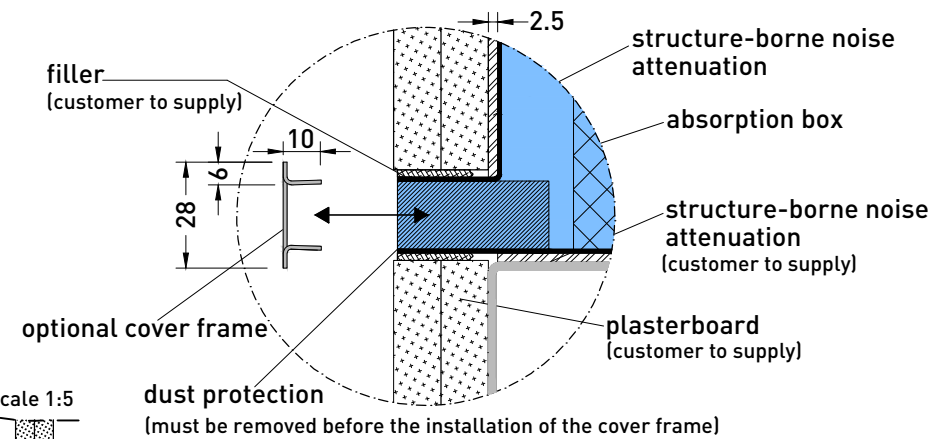
Type TG - installation in a plasterboard wall - nominal length 800mm - height 230mm



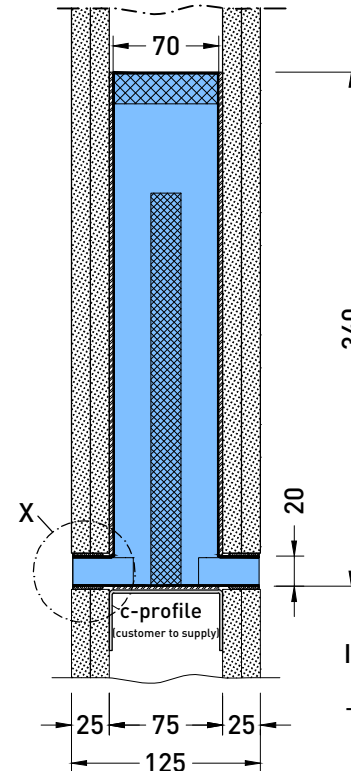
front view, scale 1:5



detail X, scale 1:2



section A, scale 1:5

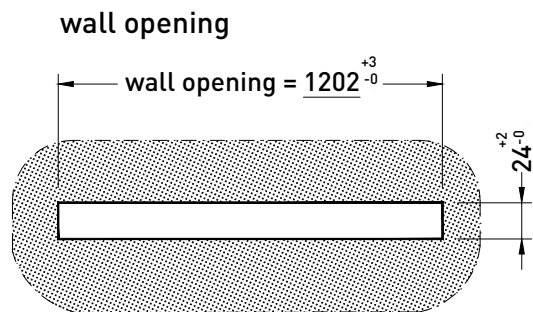


Installation note:

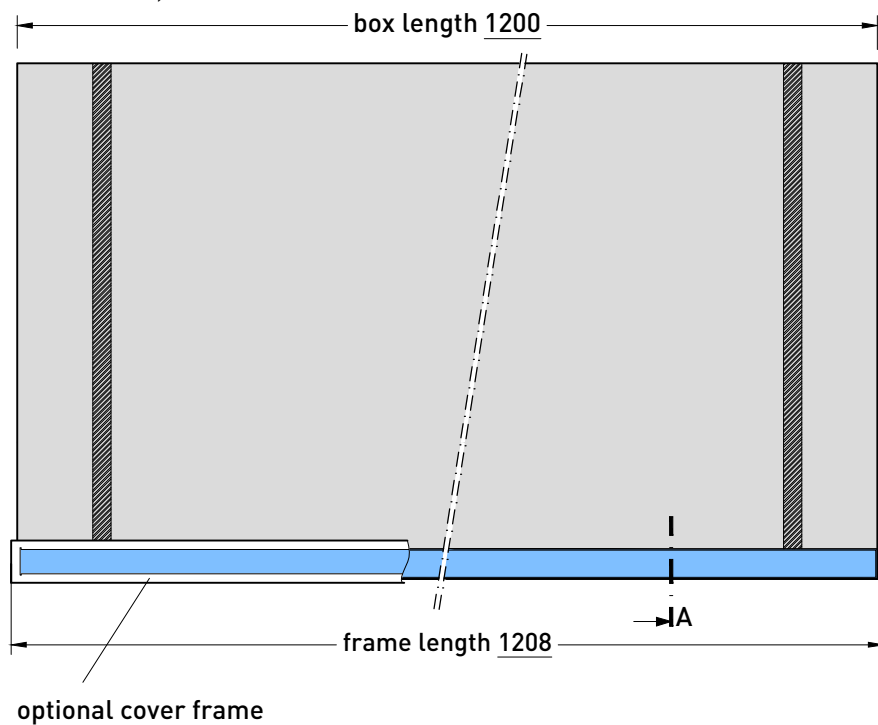
- The gap between the opening of the wall and the neck of the absorption box must not be closed with rigid materials. In order to avoid sound by-ways however, this crevice has to be closed with continuously flexible material.
- The provided dust protection has to be removed after the complete installation.

Transfer grille INDUSILENT

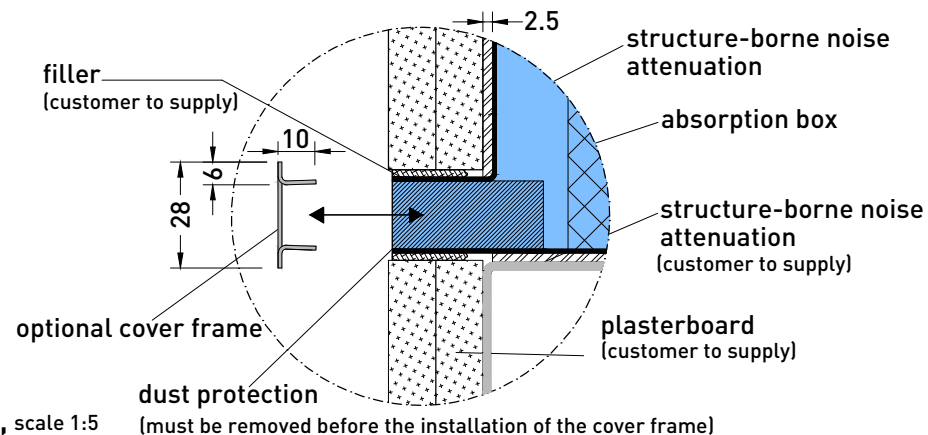
Type TG - installation in a plasterboard wall - nominal length 1000mm - height 340mm



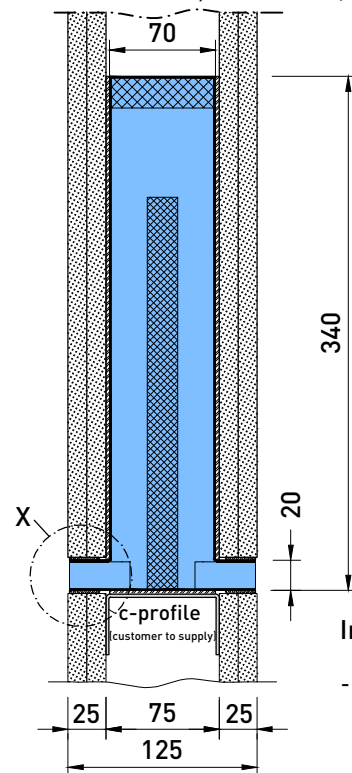
front view, scale 1:5



detail X, scale 1:2



section A, scale 1:5

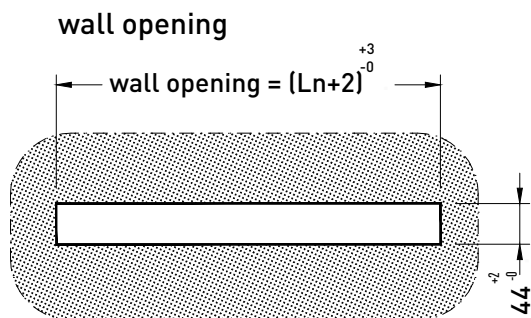


Installation note:

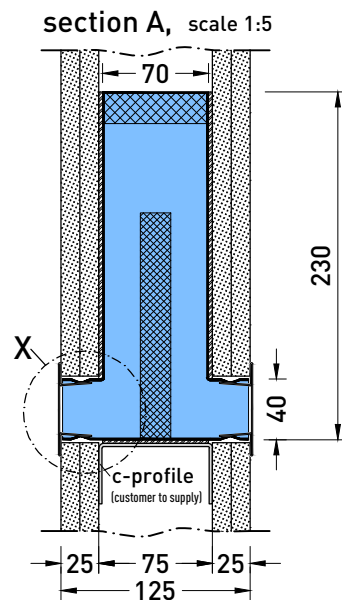
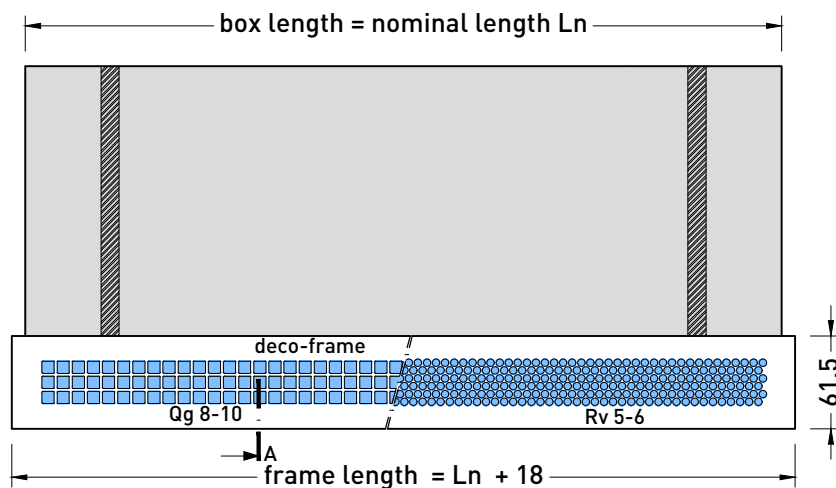
- The gap between the opening of the wall and the neck of the absorption box must not be closed with rigid materials. In order to avoid sound by-ways however, this crevice has to be closed with continuously flexible material.
- The provided dust protection has to be removed after the complete installation.

Transfer grille INDUSILENT

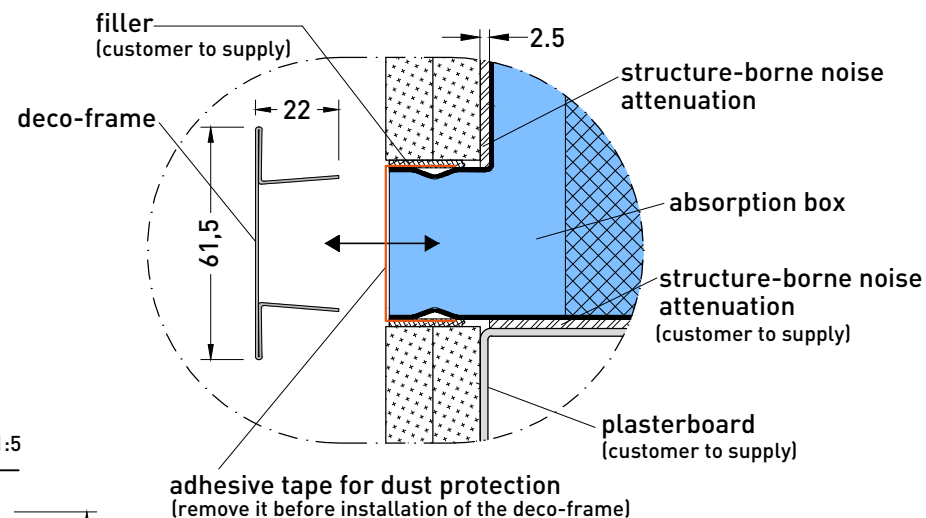
Type TG - installation in a plasterboard wall - nominal length 1200mm - height 340mm



front view, scale 1:5



detail X, scale 1:2



The deco-frame can be chosen between a square- (Qg 8-10) and a round perforation (Rv 5-6).

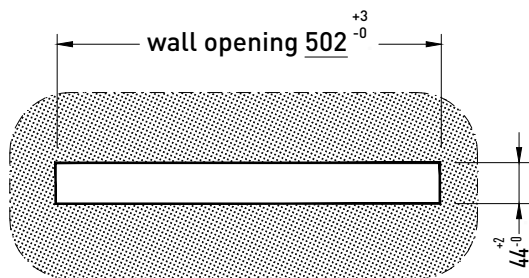
Transfer grille INDUSILENT

Type TR - for installation in a plasterboard wall with deco-frame - height 230mm

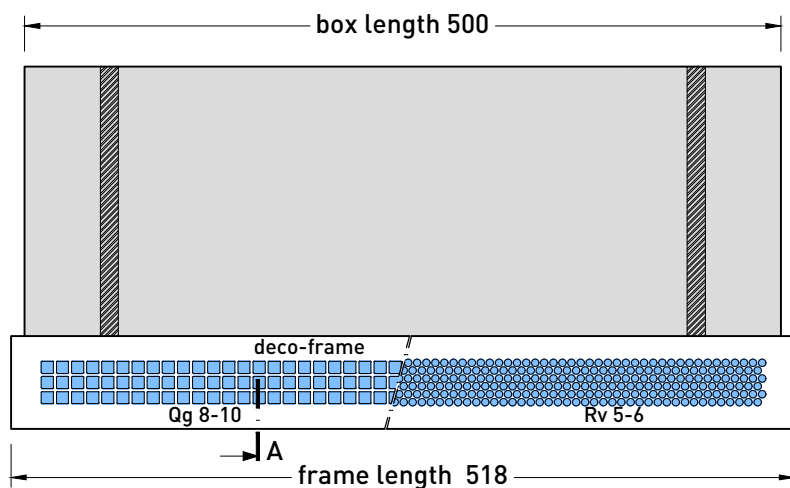
Installation note:

- The gap between the opening of the wall and the neck of the absorption box must not be closed with rigid materials. In order to avoid sound by-ways however, this crevice has to be closed with continuously flexible material.
- The provided dust protection has to be removed after the complete installation.

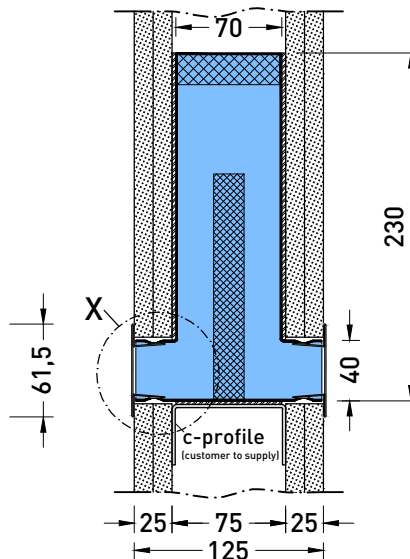
wall opening



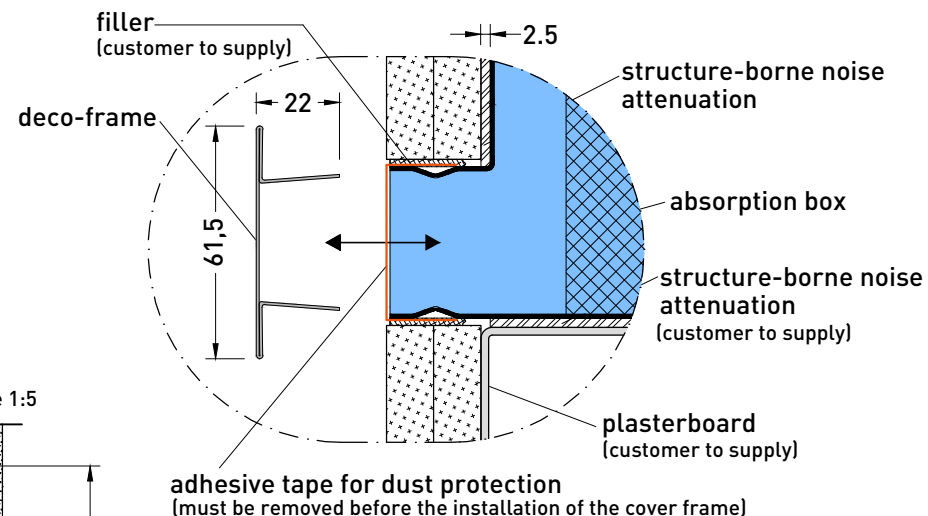
front view, scale 1:5



section A, scale 1:5



detail X, scale 1:2



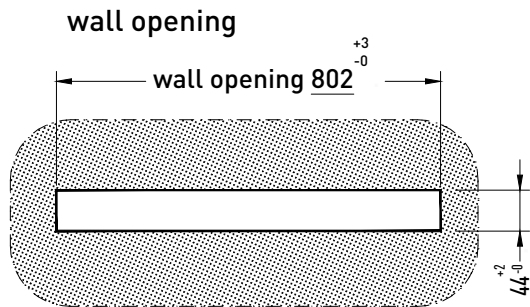
Installation note:

- The gap between the opening of the wall and the neck of the absorption box must not be closed with rigid materials. In order to avoid sound by-ways however, this crevice has to be closed with continuously flexible material.
- The provided dust protection has to be removed after the complete installation.

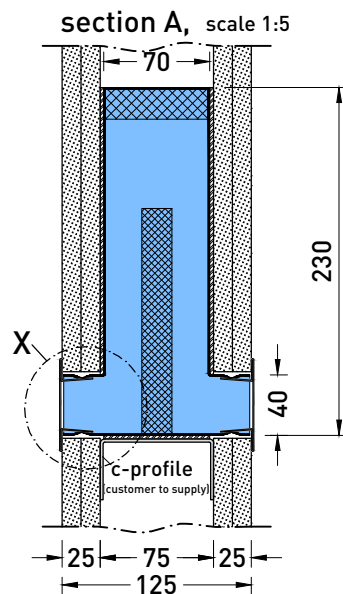
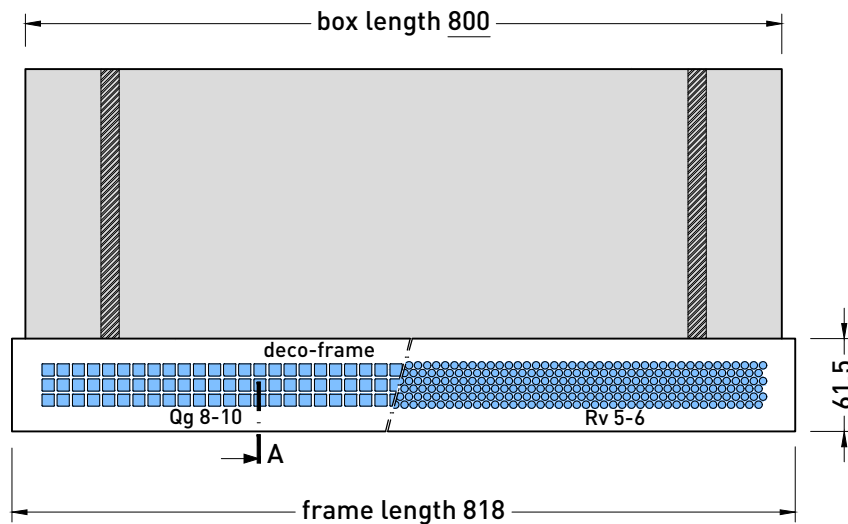
The deco-frame can be chosen between a square- (Qg 8-10) and a round perforation (Rv 5-6).

Transfer grille INDUSILENT

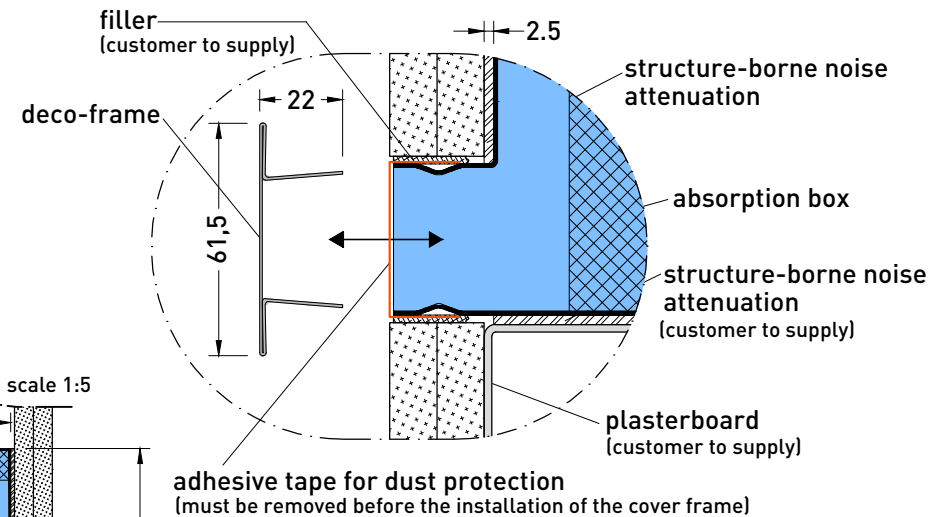
Type TR - for installation in a plasterboard wall with deco-frame - nominal length 500mm - height 230mm



front view, scale 1:5



detail X, scale 1:2



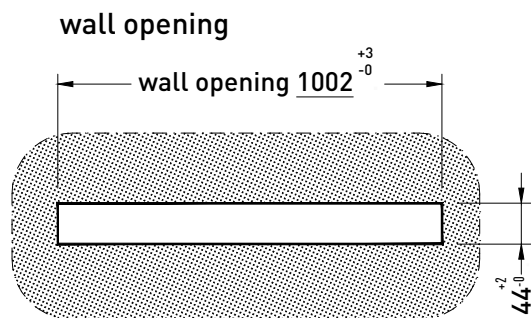
The deco-frame can be chosen between a square- (Qg 8-10) and a round perforation (Rv 5-6).

Transfer grille INDUSILENT

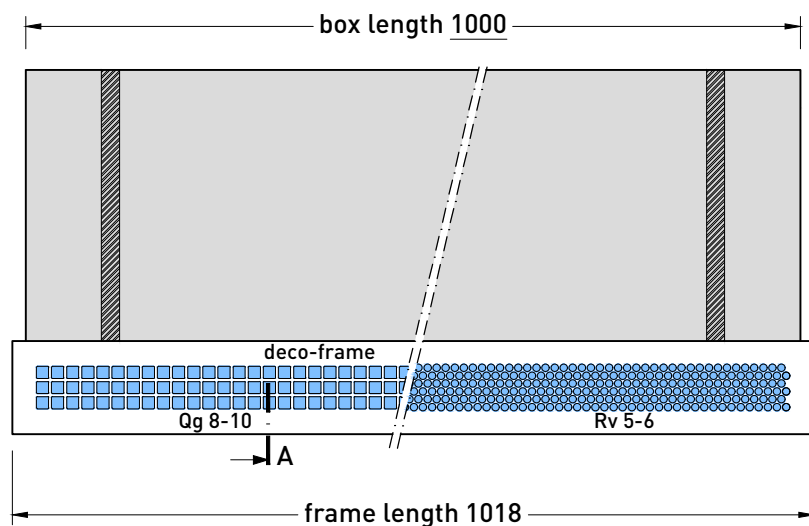
Type TR - for installation in a plasterboard wall with deco-frame - nominal length 800mm - height 230mm

Installation note:

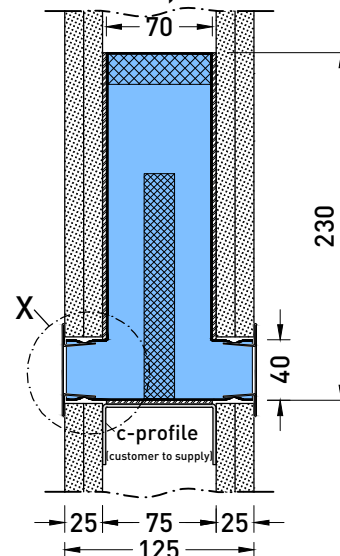
- The gap between the opening of the wall and the neck of the absorption box must not be closed with rigid materials. In order to avoid sound by-ways however, this crevice has to be closed with continuously flexible material.
- The provided dust protection has to be removed after the complete installation.



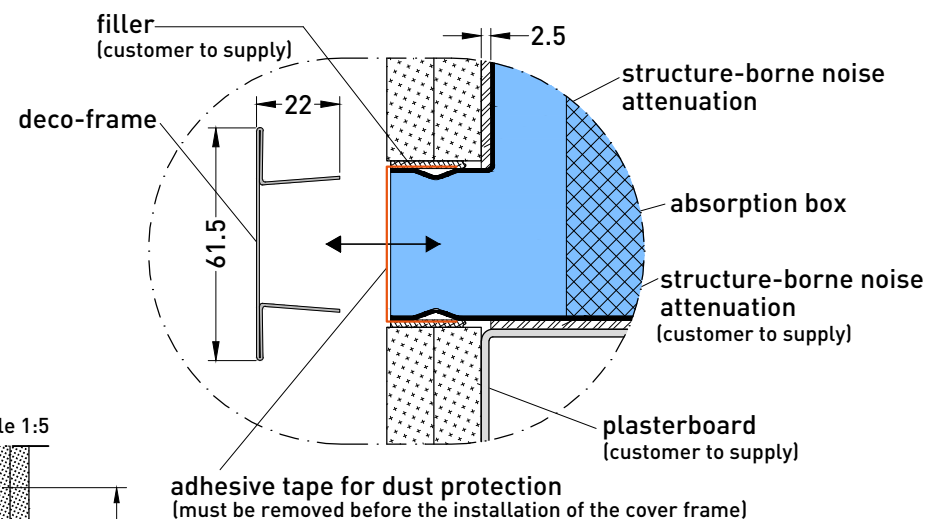
front view, scale 1:5



section A, scale 1:5



detail X, scale 1:2



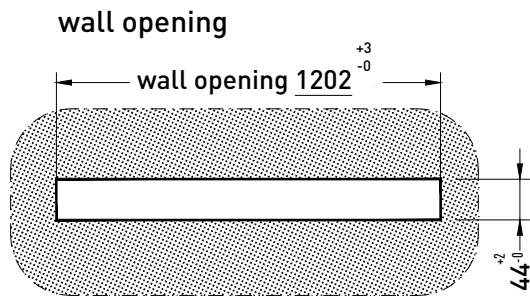
The deco-frame can be chosen between a square- (Qg 8-10) and a round perforation (Rv 5-6).

Transfer grille INDUSILENT

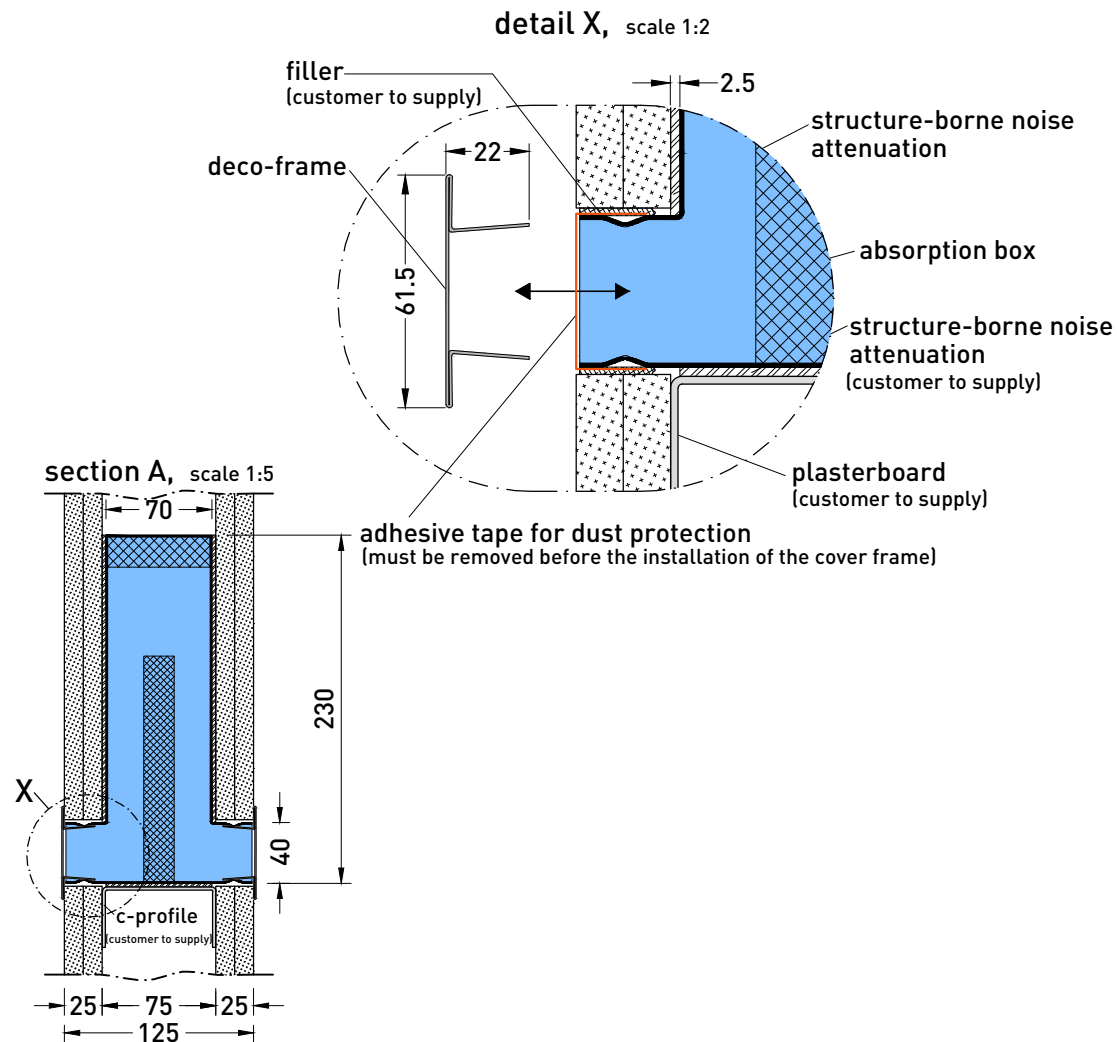
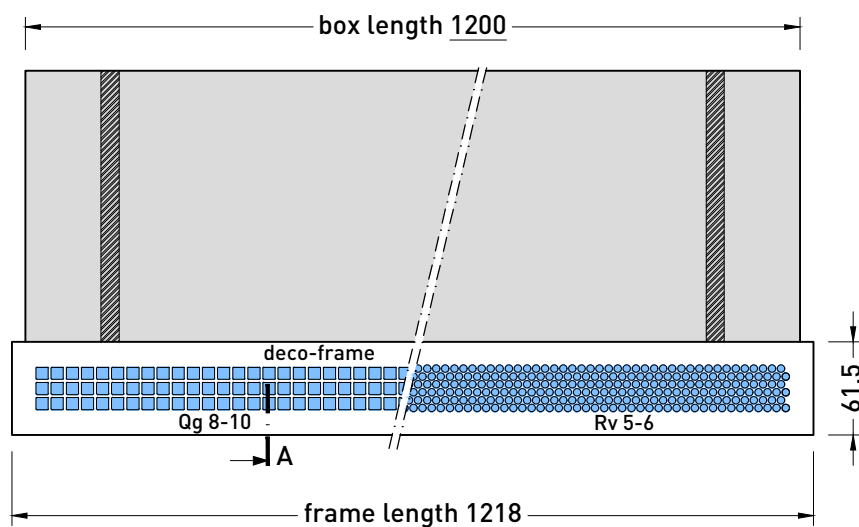
Type TR - for installation in a plasterboard wall with deco-frame - nominal length 1000mm - height 230mm

Installation note:

- The gap between the opening of the wall and the neck of the absorption box must not be closed with rigid materials. In order to avoid sound by-ways however, this crevice has to be closed with continuously flexible material.
- The provided dust protection has to be removed after the complete installation.



front view, scale 1:5



Installation note:

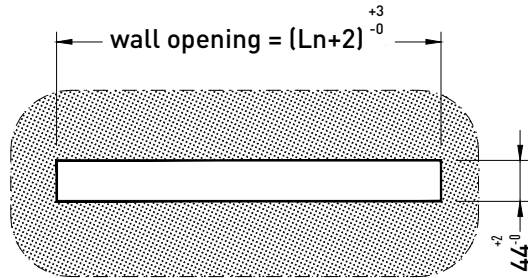
- The gap between the opening of the wall and the neck of the absorption box must not be closed with rigid materials. In order to avoid sound by-ways however, this crevice has to be closed with continuously flexible material.
- The provided dust protection has to be removed after the complete installation.

The deco-frame can be chosen between a square- (Qg 8-10) and a round perforation (Rv 5-6).

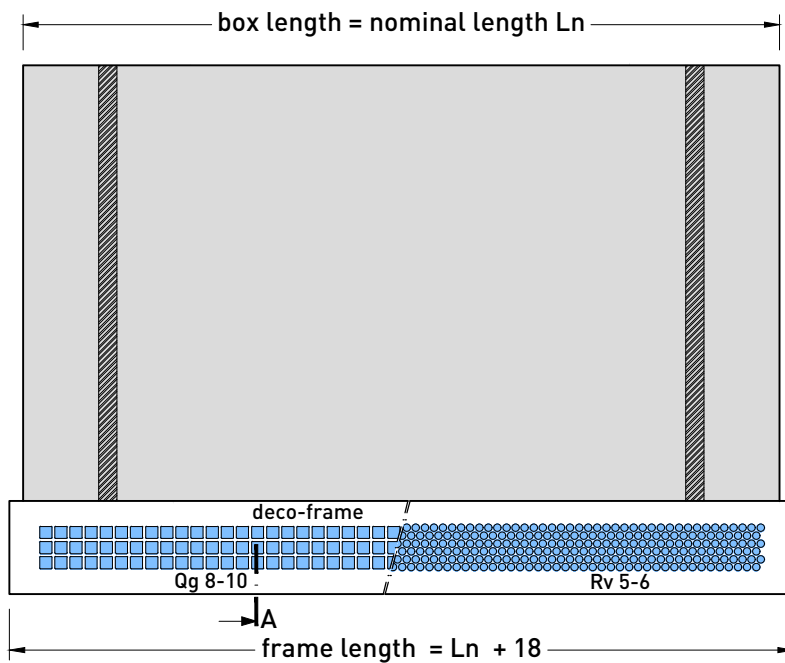
Transfer grille INDUSILENT

Type TR - for installation in a plasterboard wall with deco-frame - nominal length 1200mm - height 230mm

wall opening

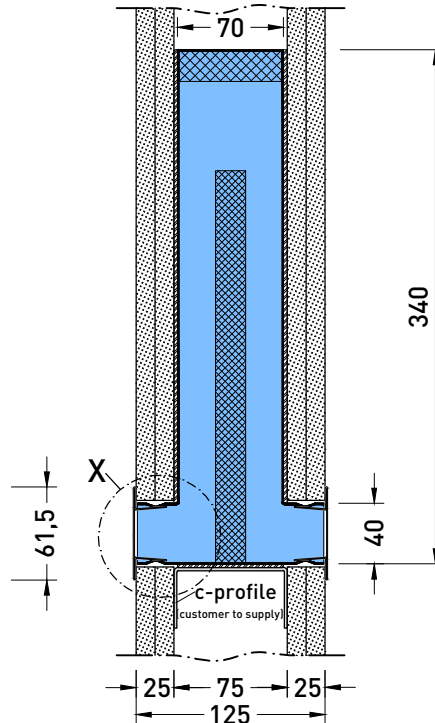


front view, scale 1:5

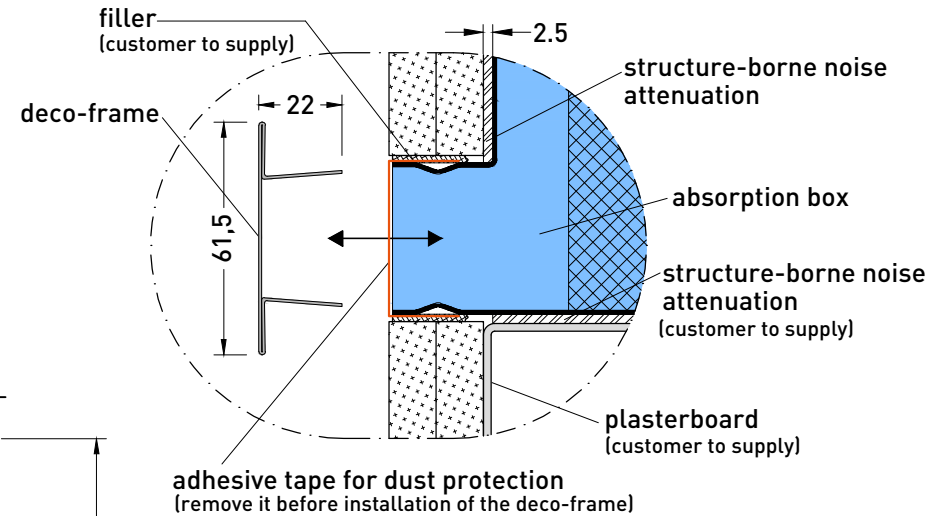


The deco-frame can be chosen between a square- (Qg 8-10) and a round perforation (Rv 5-6).

section A, scale 1:5



detail X, scale 1:2



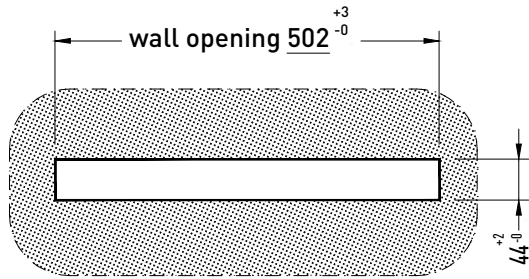
Installation note:

- The gap between the opening of the wall and the neck of the absorption box must not be closed with rigid materials. In order to avoid sound by-ways however, this crevice has to be closed with continuously flexible material.
- The provided dust protection has to be removed after the complete installation.

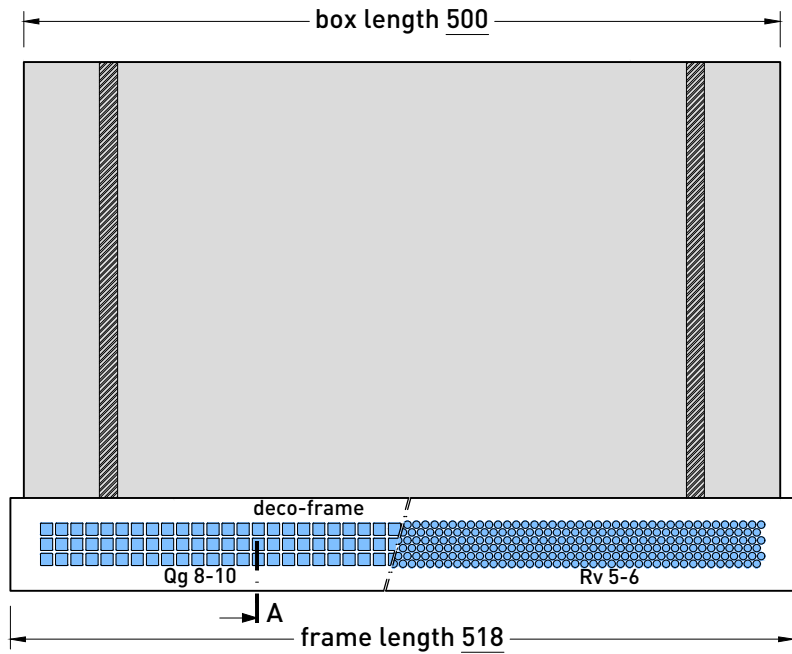
Transfer grille INDUSILENT

Type TR - for installation in a plasterboard wall with deco-frame - height 340mm

wall opening



front view, scale 1:5



The deco-frame can be chosen between a square- (Qg 8-10) and a round perforation (Rv 5-6).

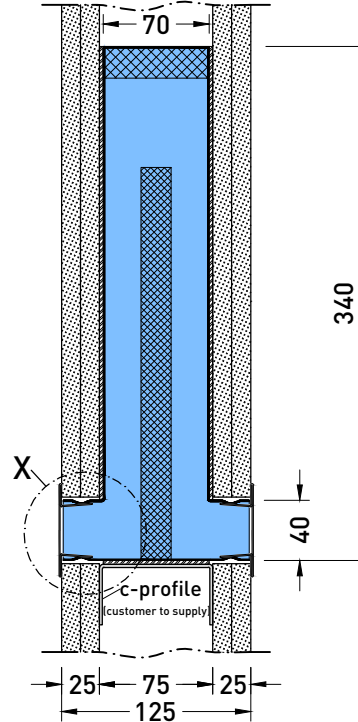
Transfer grille INDUSILENT

Type TR - for installation in a plasterboard wall with deco-frame - nominal length 500mm - height 340mm

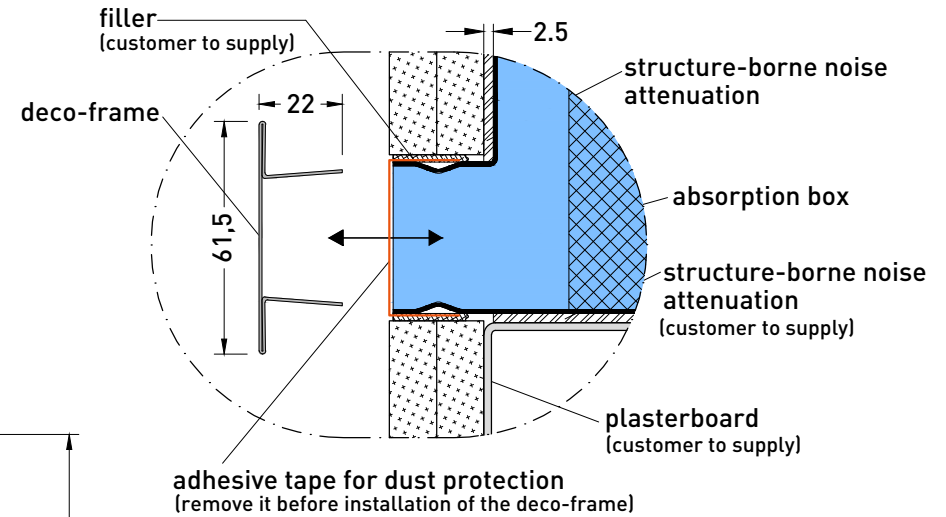
CAD-Nr.: 32219814332.dwg

- technical modifications reserved -

section A, scale 1:5



detail X, scale 1:2



Installation note:

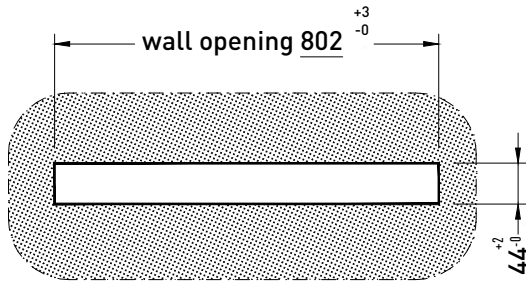
- The gap between the opening of the wall and the neck of the absorption box must not be closed with rigid materials. In order to avoid sound by-ways however, this crevice has to be closed with continuously flexible material.
- The provided dust protection has to be removed after the complete installation.

Kiefer Klimatechnik GmbH
Heilbronner Strasse 380 - 388
70469 Stuttgart
Tel. (0711) 8109-0
www.kieferklima.de
proved: Wnuk / 11.03.20

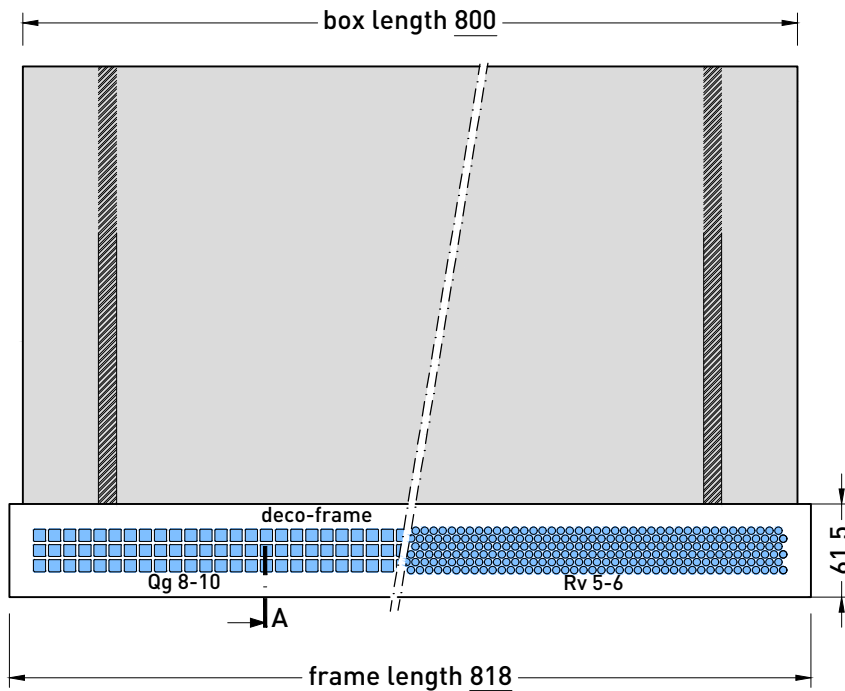
Kiefer
Klimatechnik

drawn: Pankratz / 11.03.20

wall opening



front view, scale 1:5



The deco-frame can be chosen between a square- (Qg 8-10) and a round perforation (Rv 5-6).

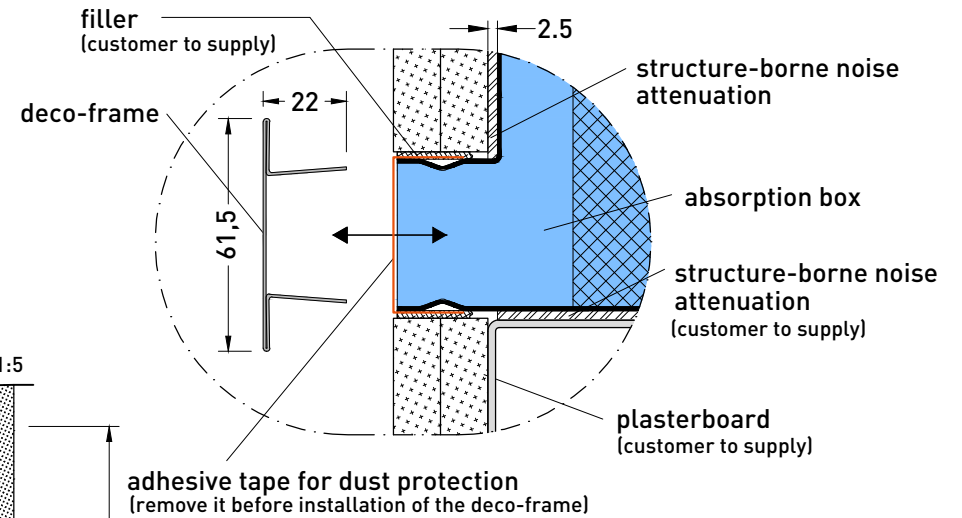
Transfer grille INDUSILENT

Type TR - for installation in a plasterboard wall with deco-frame - nominal length 800mm - height 340mm

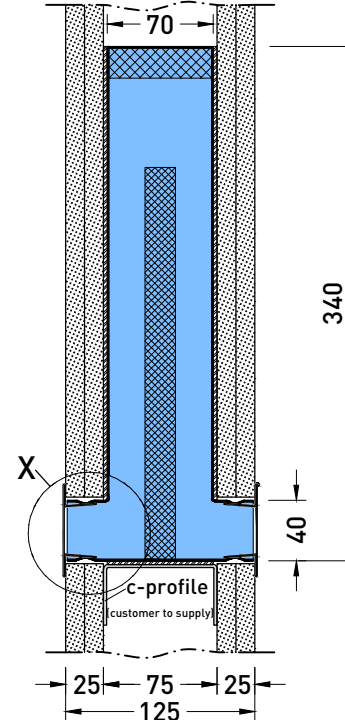
CAD-Nr.: 32219814333.dwg

- technical modifications reserved -

detail X, scale 1:2



section A, scale 1:5



Installation note:

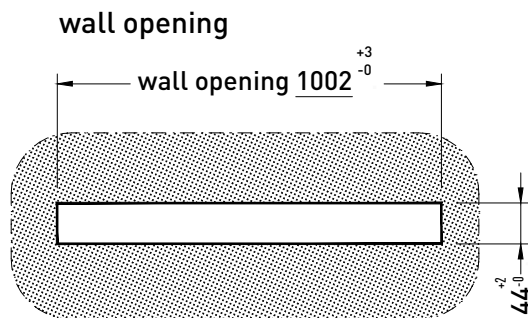
- The gap between the opening of the wall and the neck of the absorption box must not be closed with rigid materials. In order to avoid sound by-ways however, this crevice has to be closed with continuously flexible material.
- The provided dust protection has to be removed after the complete installation.

Kiefer Klimatechnik GmbH
Heilbronner Strasse 380 - 388
70469 Stuttgart
Tel. (0711) 8109-0
www.kieferklima.de

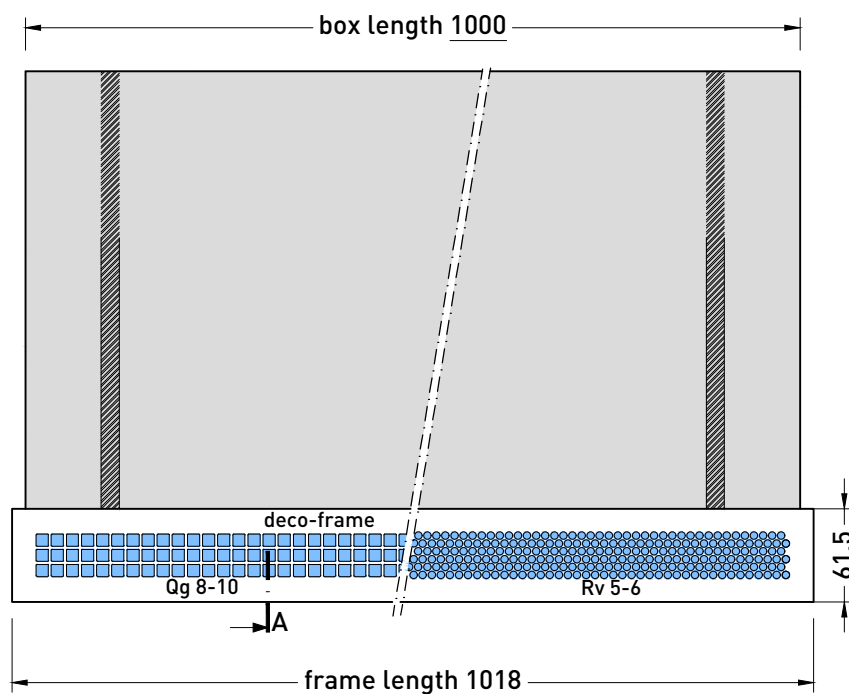
Kiefer
Klimatechnik

proved: Wnuk / 11.03.20

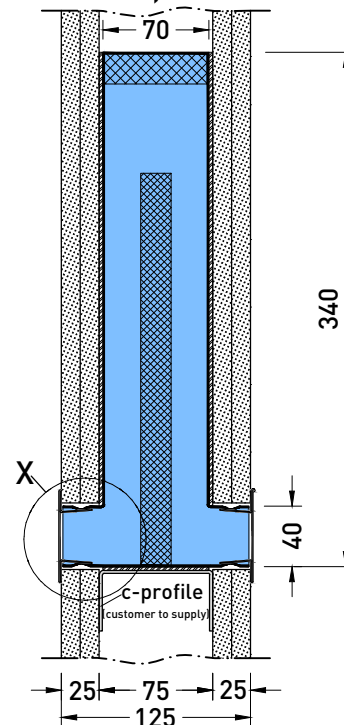
drawn: Pankratz / 11.03.20



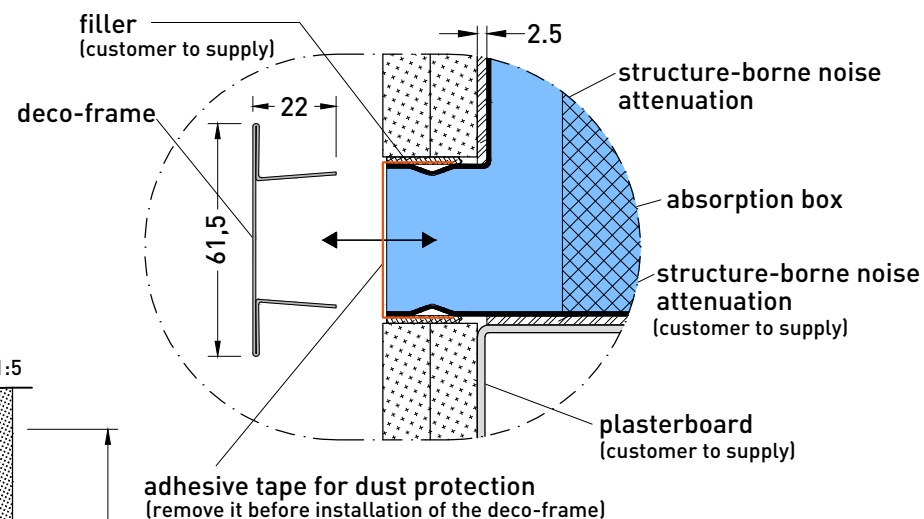
front view, scale 1:5



section A, scale 1:5



detail X, scale 1:2



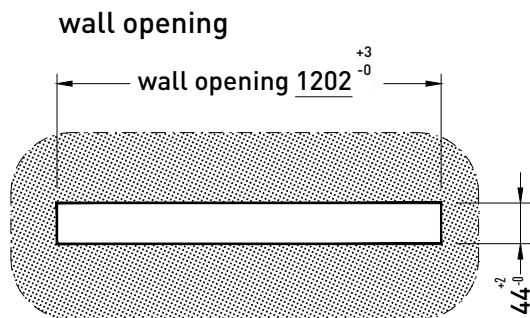
Installation note:

- The gap between the opening of the wall and the neck of the absorption box must not be closed with rigid materials. In order to avoid sound by-ways however, this crevice has to be closed with continuously flexible material.
- The provided dust protection has to be removed after the complete installation.

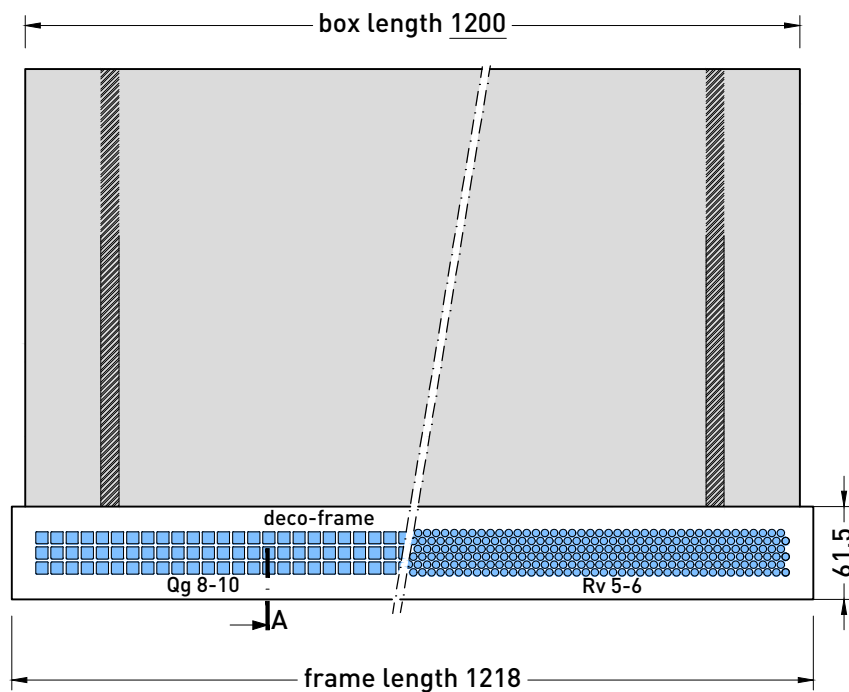
The deco-frame can be chosen between a square- (Qg 8-10) and a round perforation (Rv 5-6).

Transfer grille INDUSILENT

Type TR - for installation in a plasterboard wall with deco-frame - nominal length 1000mm - height 340mm



front view, scale 1:5



The deco-frame can be chosen between a square- (Qg 8-10) and a round perforation (Rv 5-6).

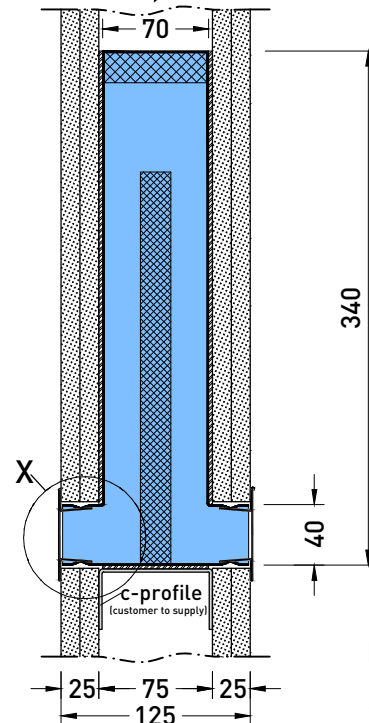
Transfer grille INDUSILENT

Type TR - for installation in a plasterboard wall with deco-frame - nominal length 1200mm - height 340mm

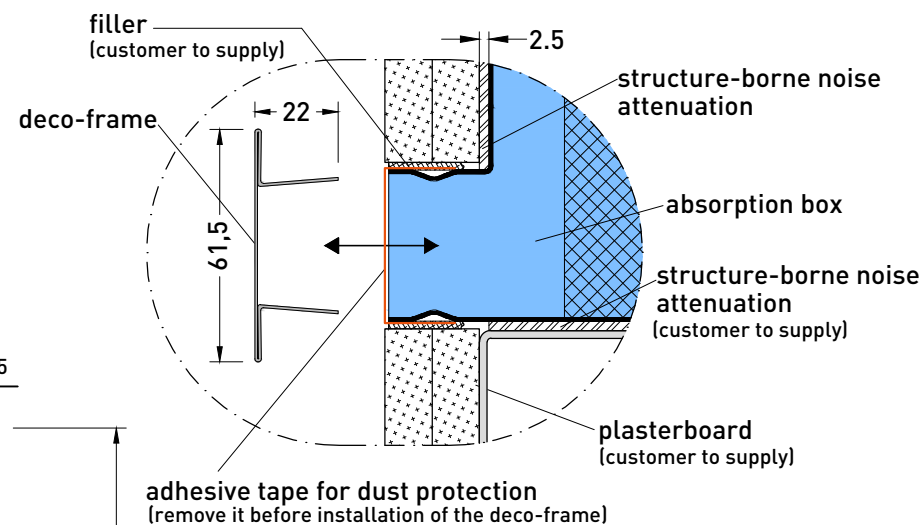
CAD-Nr.: 32219814335.dwg

- technical modifications reserved -

section A, scale 1:5



detail X, scale 1:2



Installation note:

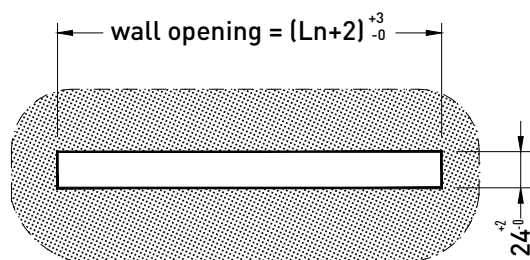
- The gap between the opening of the wall and the neck of the absorption box must not be closed with rigid materials. In order to avoid sound by-ways however, this crevice has to be closed with continuously flexible material.
- The provided dust protection has to be removed after the complete installation.

Kiefer Klimatechnik GmbH
Heilbronner Strasse 380 - 388
70469 Stuttgart
Tel. (0711) 8109-0
www.kieferklima.de
proved: Wnuk / 11.03.20

Kiefer
Klimatechnik

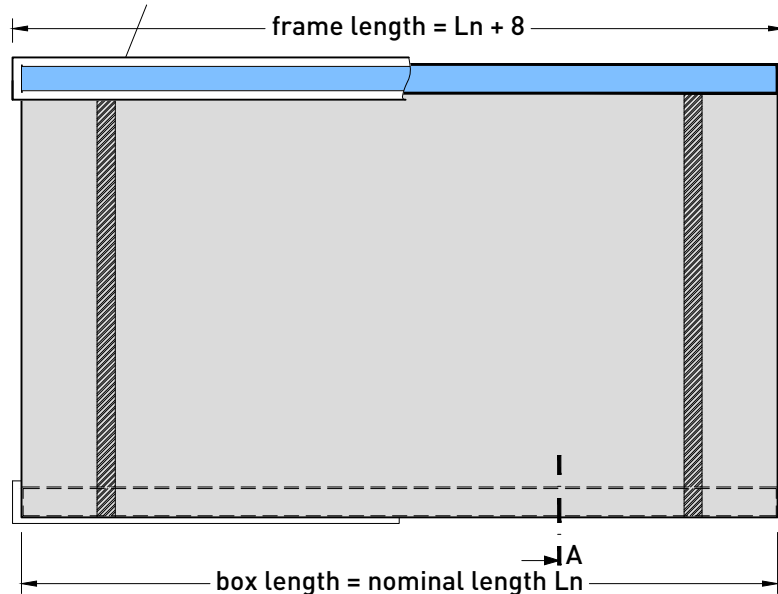
drawn: Pankratz / 11.03.20

wall opening

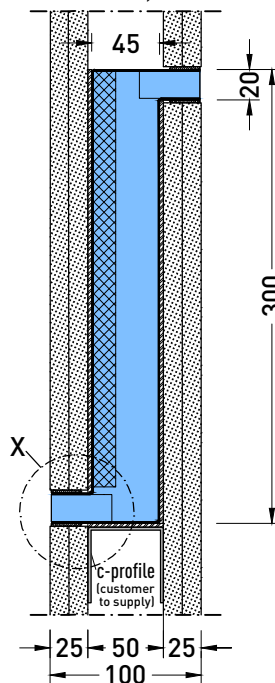


front view, scale 1:5

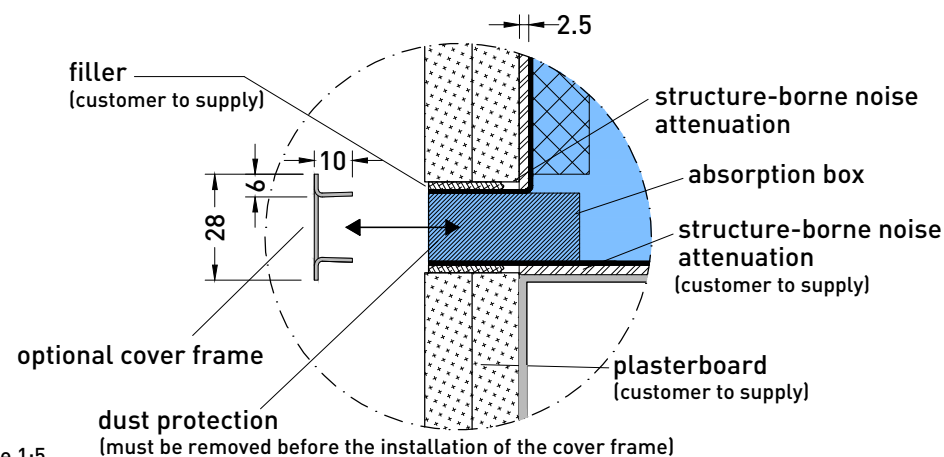
optional cover frame



section A, scale 1:5



detail X, scale 1:2



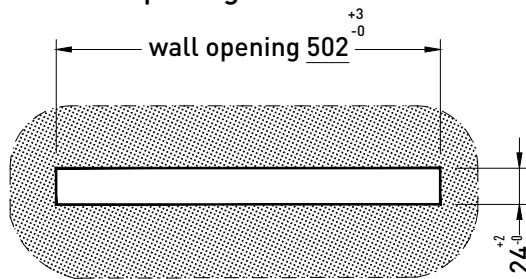
Installation note:

- The gap between the opening of the wall and the neck of the absorption box must not be closed with rigid materials. In order to avoid sound by-ways however, this crevice has to be closed with continuously flexible material.
- The provided dust protection has to be removed after the complete installation.

Transfer grille INDUSILENT

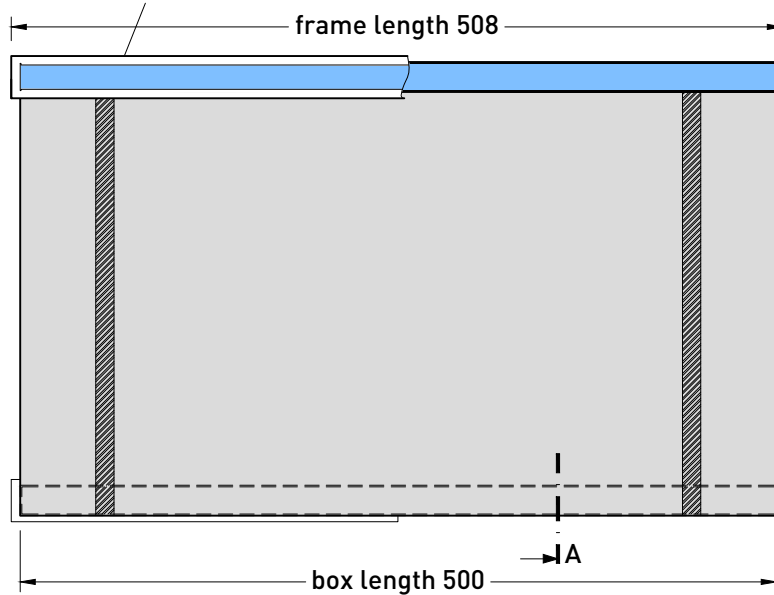
Type SG - installation in a plasterboard wall

wall opening

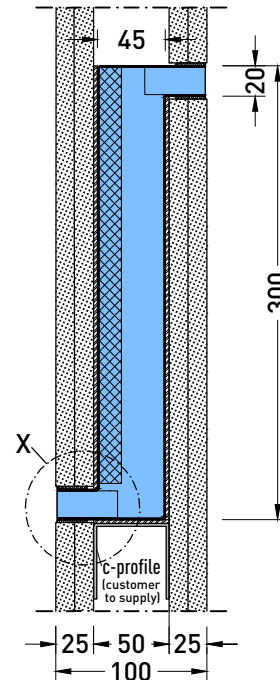


front view, scale 1:5

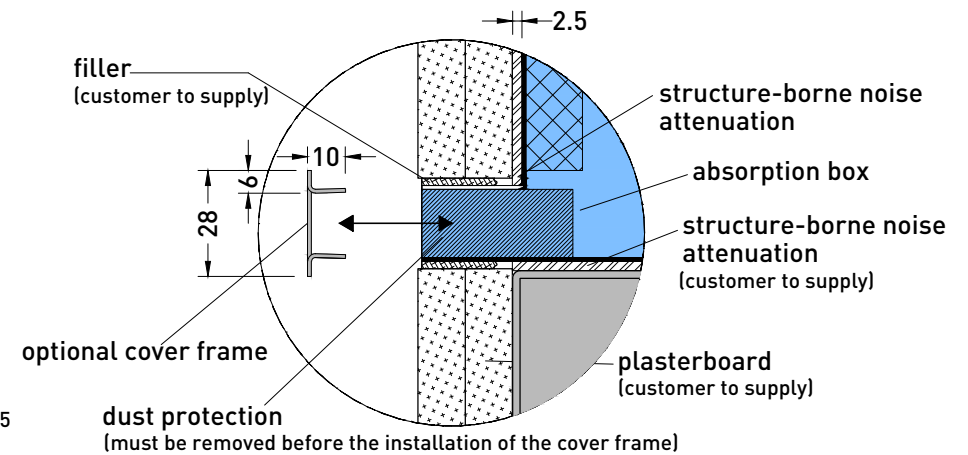
optional cover frame



section A, scale 1:5



detail X, scale 1:2

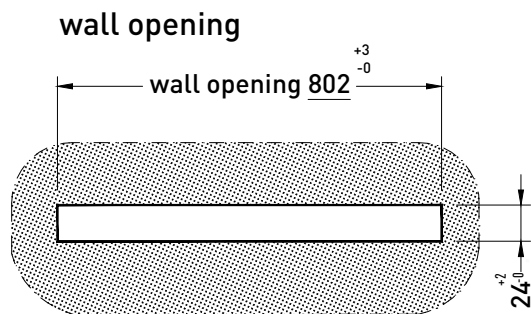


Installation note:

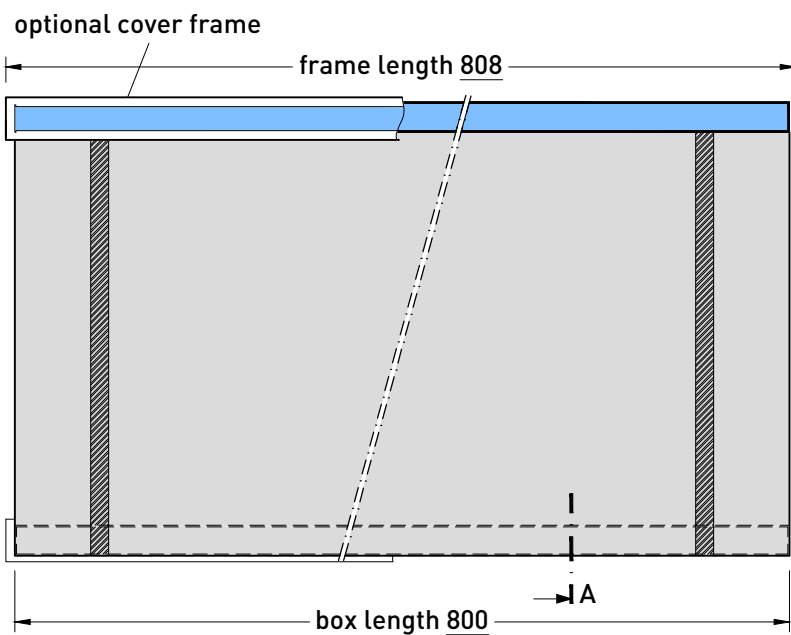
- The gap between the opening of the wall and the neck of the absorption box must not be closed with rigid materials. In order to avoid sound by-ways however, this crevice has to be closed with continuously flexible material.
- The provided dust protection has to be removed after the complete installation.

Transfer grille INDUSILENT

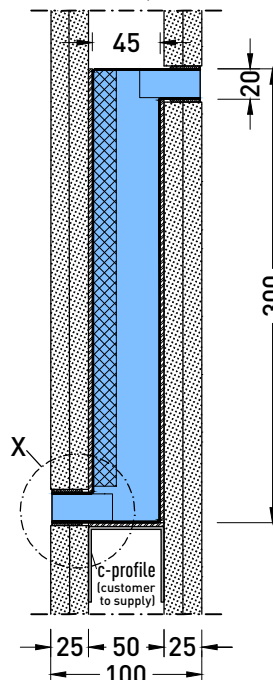
Type SG - installation in a plasterboard wall - nominal length = 500mm



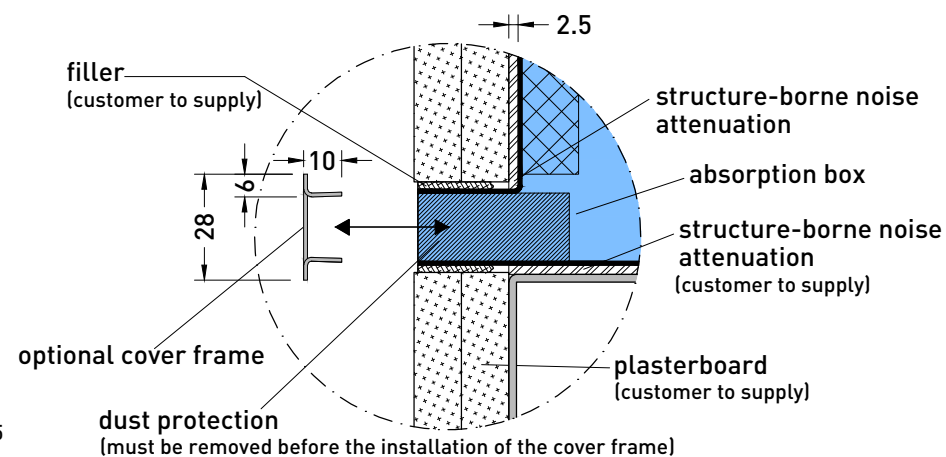
front view, scale 1:5



section A, scale 1:5



detail X, scale 1:2



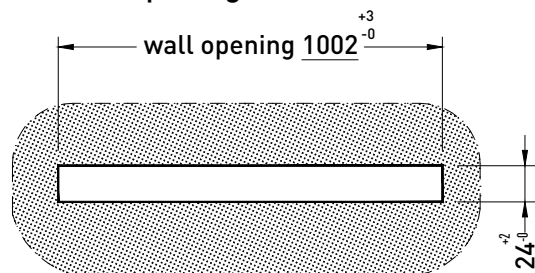
Installation note:

- The gap between the opening of the wall and the neck of the absorption box must not be closed with rigid materials. In order to avoid sound by-ways however, this crevice has to be closed with continuously flexible material.
- The provided dust protection has to be removed after the complete installation.

Transfer grille INDUSILENT

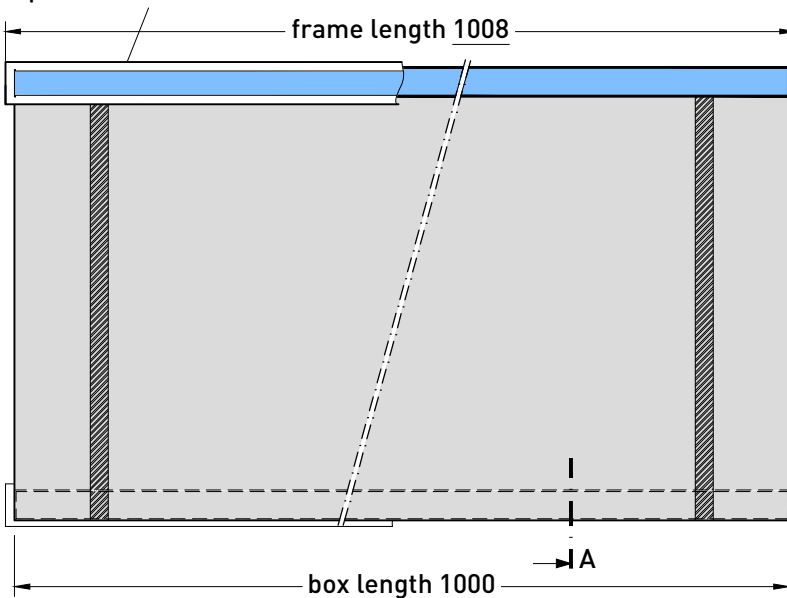
Type SG - installation in a plasterboard wall - nominal length = 800mm

wall opening

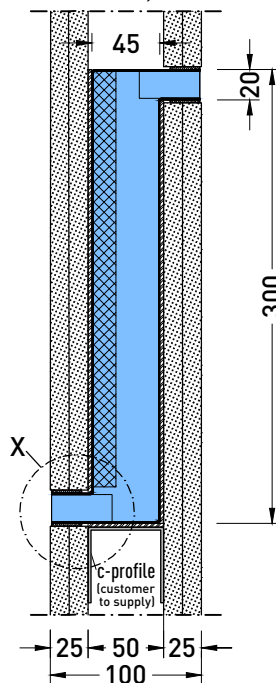


front view, scale 1:5

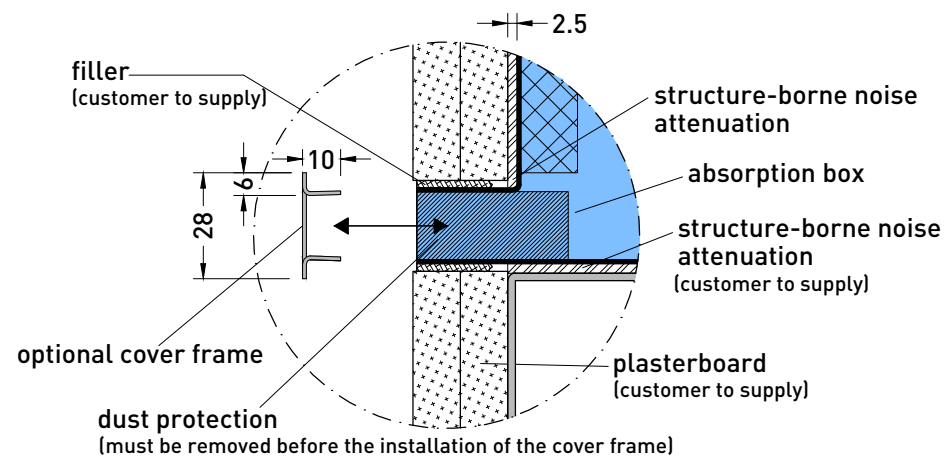
optional cover frame



section A, scale 1:5



detail X, scale 1:2



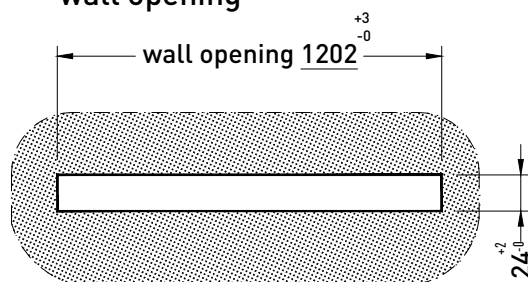
Installation note:

- The gap between the opening of the wall and the neck of the absorption box must not be closed with rigid materials. In order to avoid sound by-ways however, this crevice has to be closed with continuously flexible material.
- The provided dust protection has to be removed after the complete installation.

Transfer grille INDUSILENT

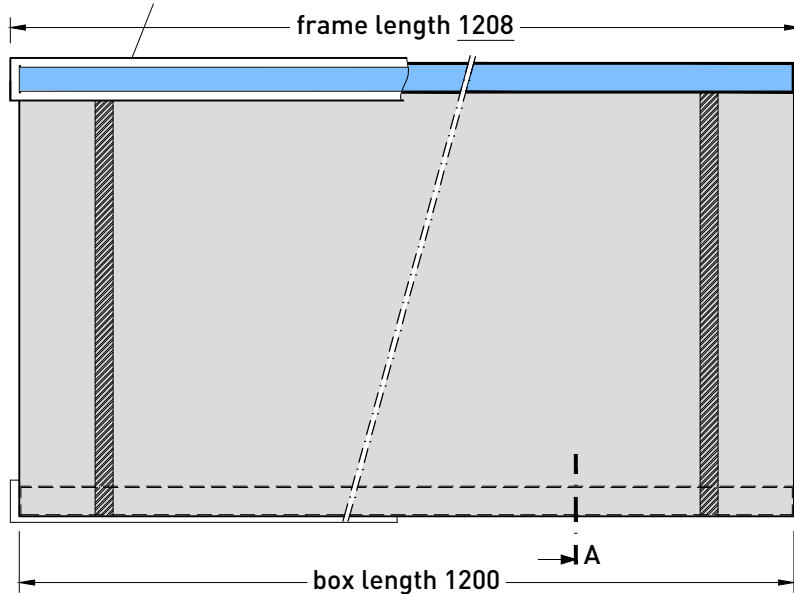
Type SG - installation in a plasterboard wall - nominal length = 1000mm

wall opening

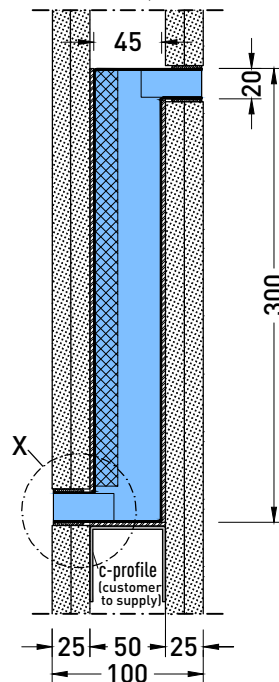


front view, scale 1:5

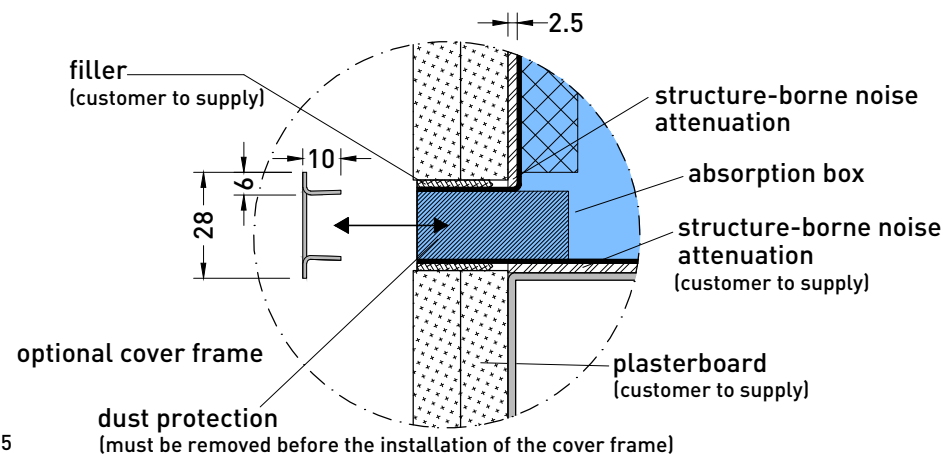
optional cover frame



section A, scale 1:5



detail X, scale 1:2

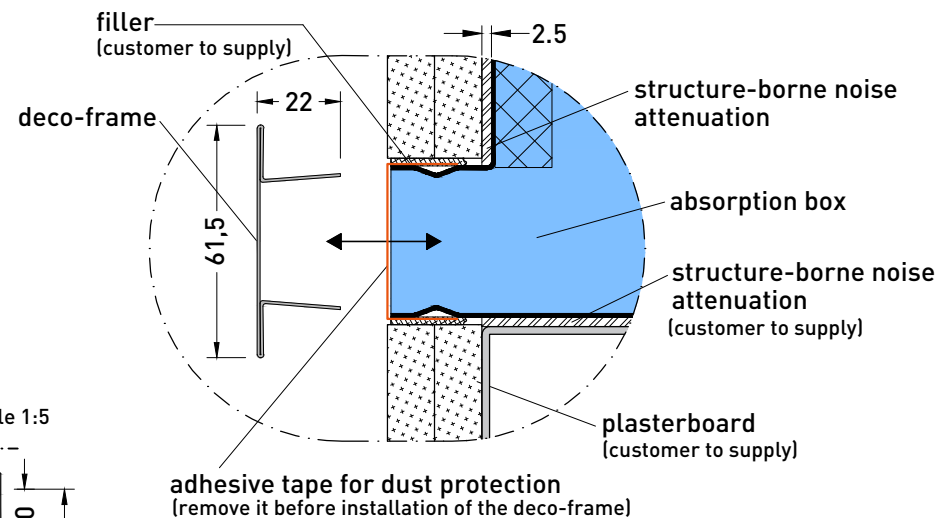
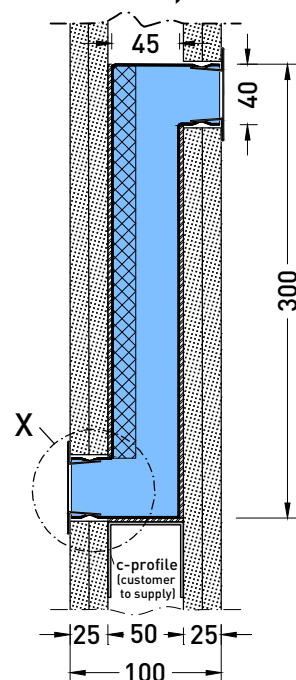
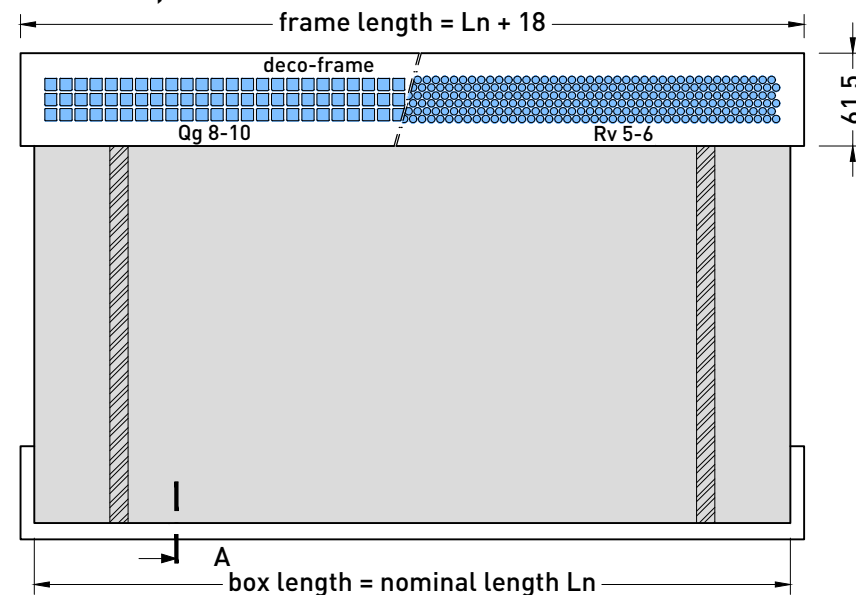
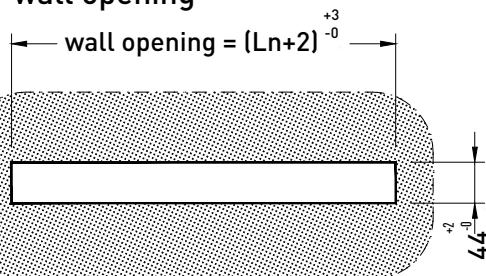


Installation note:

- The gap between the opening of the wall and the neck of the absorption box must not be closed with rigid materials. In order to avoid sound by-ways however, this crevice has to be closed with continuously flexible material.
- The provided dust protection has to be removed after the complete installation.

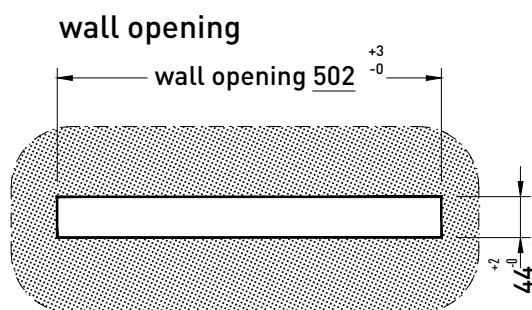
Transfer grille INDUSILENT

Type SG - installation in a plasterboard wall - nominal length = 1200mm

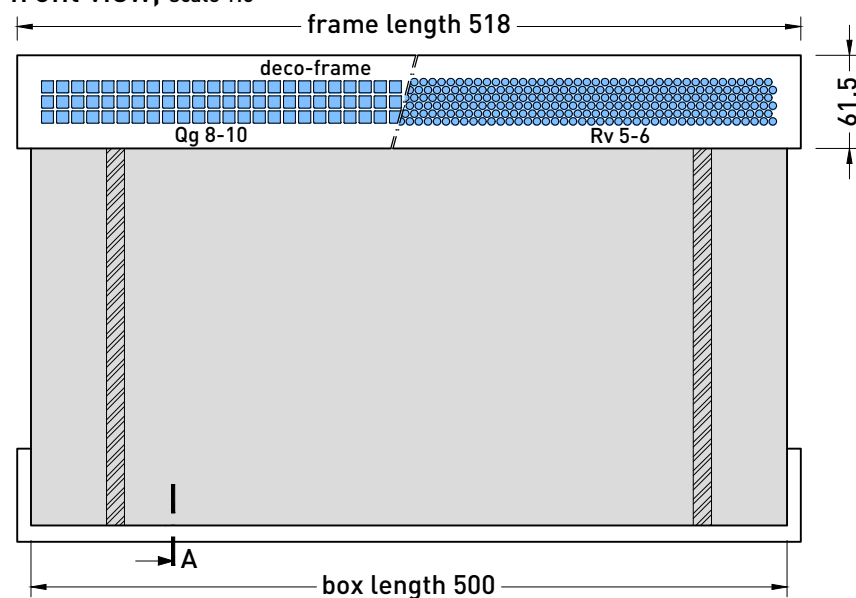


- The gap between the opening of the wall and the neck of the absorption box must not be closed with rigid materials.
In order to avoid sound by-ways however, this crevice has to be closed with continuously flexible material.
- The provided dust protection has to be removed after the complete installation.

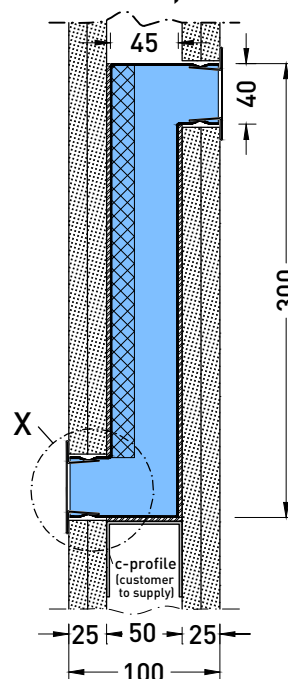
Type SR - for installation in a plasterboard wall with deco-frame



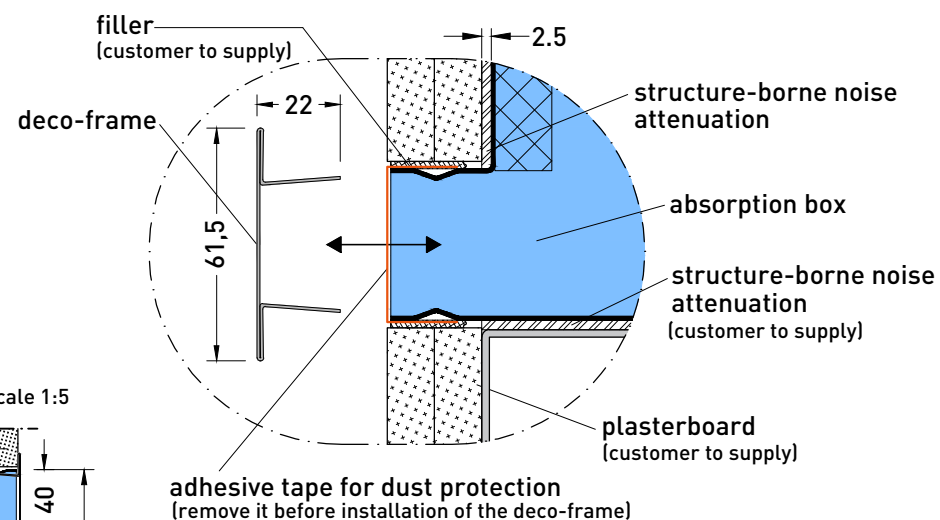
front view, scale 1:5



section A, scale 1:5



detail X, scale 1:2



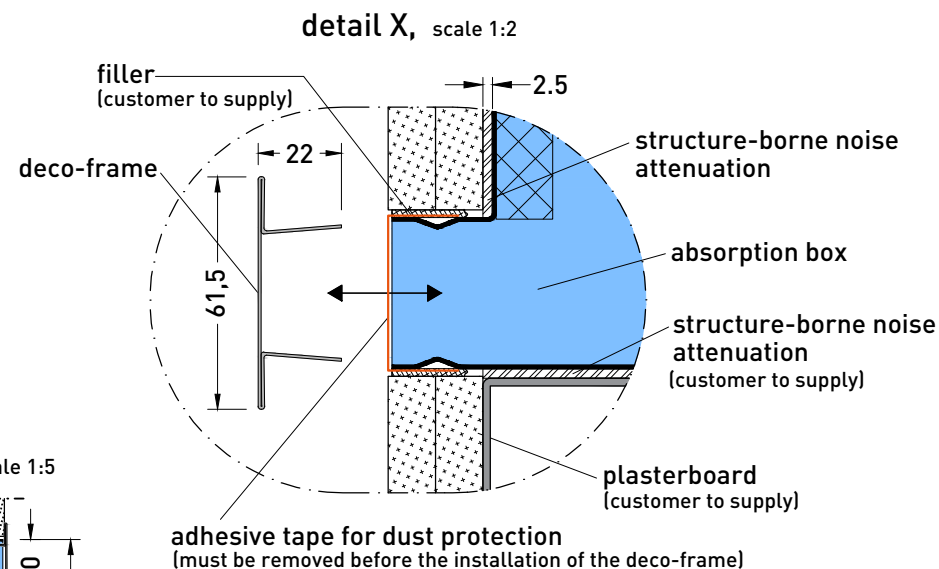
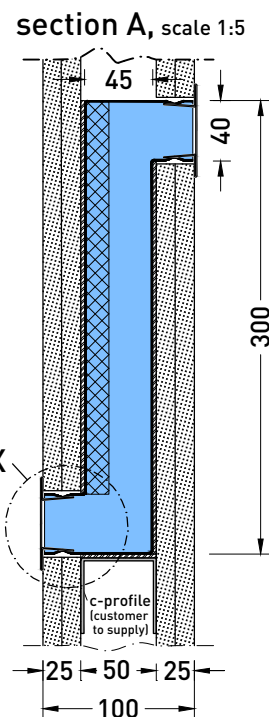
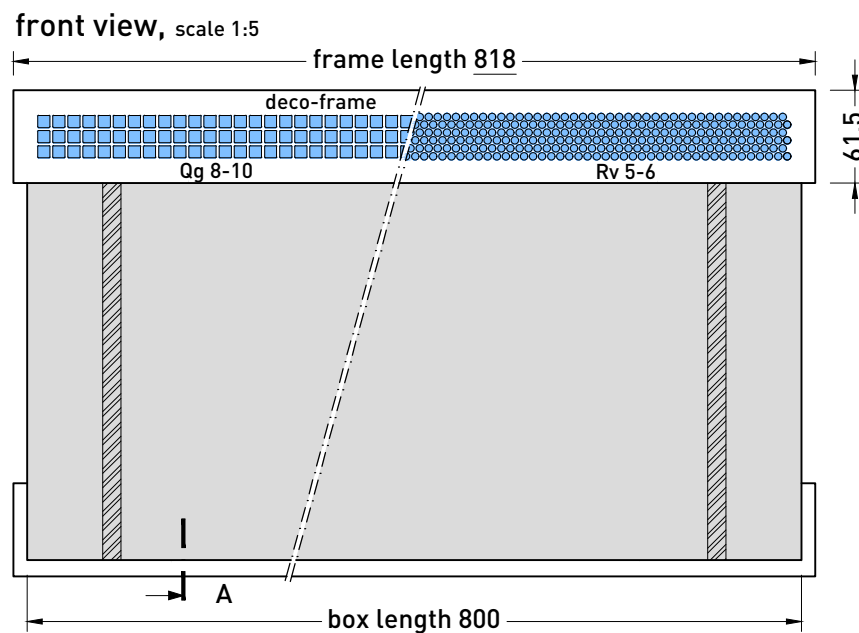
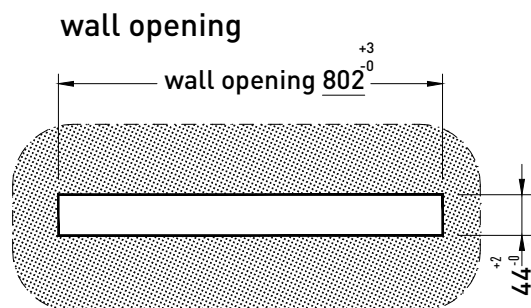
Installation note:

- The gap between the opening of the wall and the neck of the absorption box must not be closed with rigid materials. In order to avoid sound by-ways however, this crevice has to be closed with continuously flexible material.
- The provided dust protection has to be removed after the complete installation.

The deco-frame can be chosen between a square- (Qg 8-10) and a round perforation (Rv 5-6).

Transfer grille INDUSILENT

Type SR - for installation in a plasterboard wall with deco-frame



The deco-frame can be chosen between a square- (Qg 8-10) and a round perforation (Rv 5-6).

Transfer grille INDUSILENT

Type SR - for installation in a plasterboard wall with deco-frame - nominal length 800mm

CAD-Nr.: 32219814353.dwg

- technical modifications reserved -

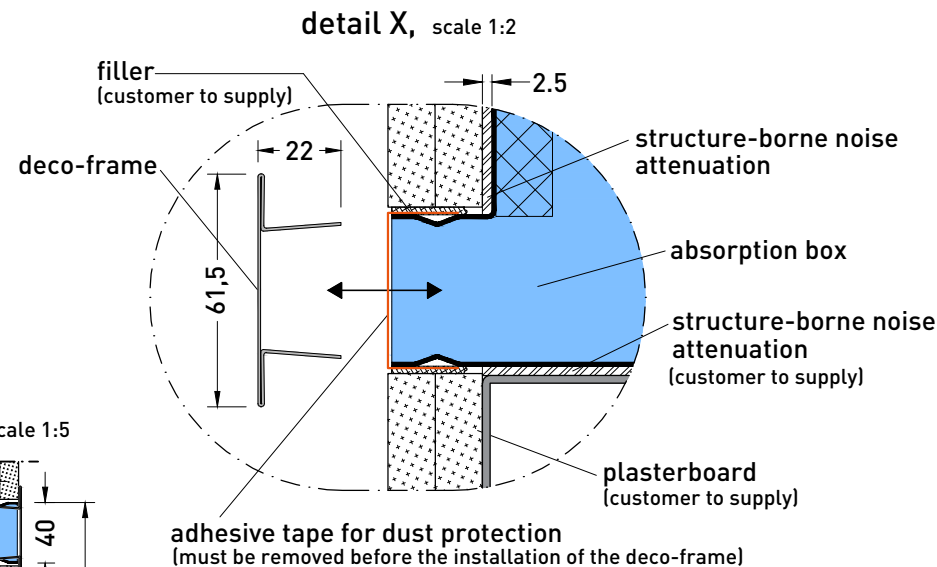
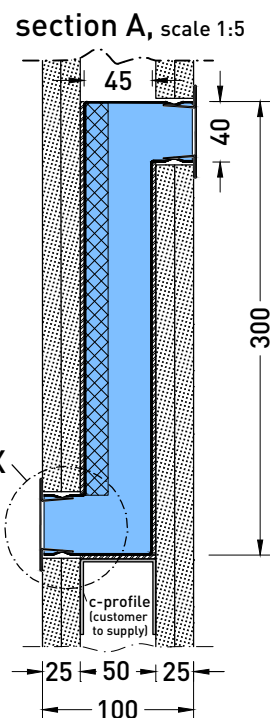
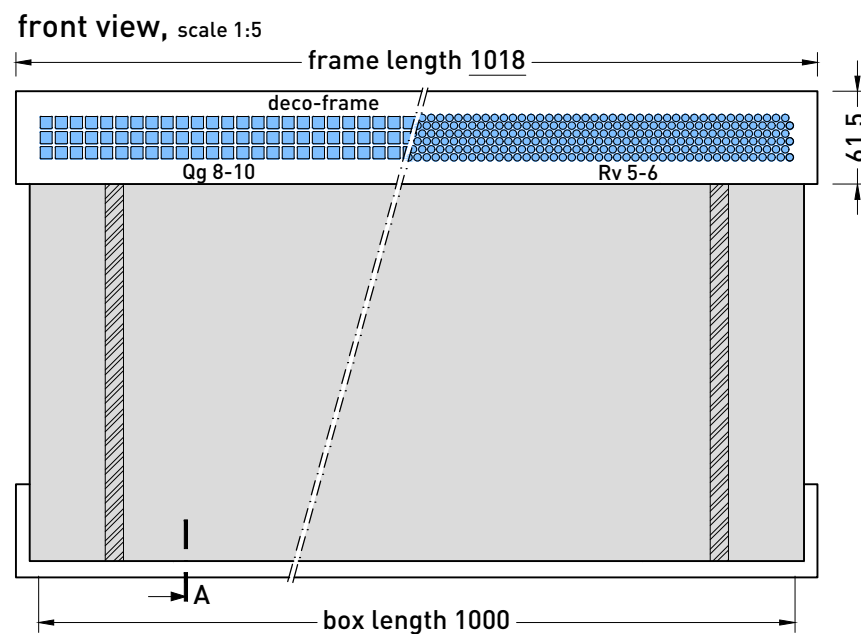
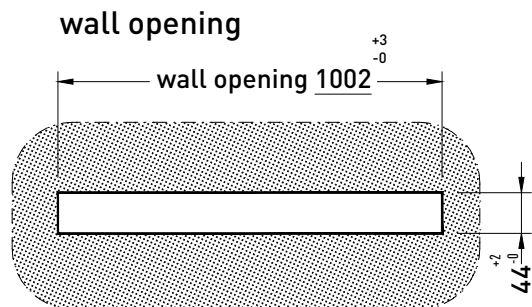
Installation note:

- The gap between the opening of the wall and the neck of the absorption box must not be closed with rigid materials. In order to avoid sound by-ways however, this crevice has to be closed with continuously flexible material.
- The provided dust protection has to be removed after the complete installation.

Kiefer Klimatechnik GmbH
Heilbronner Strasse 380 - 388
70469 Stuttgart
Tel. (0711) 8109-0
www.kieferklima.de
proved: Wnuk / 11.03.20

Kiefer
Klimatechnik

drawn: Pankratz / 11.03.20



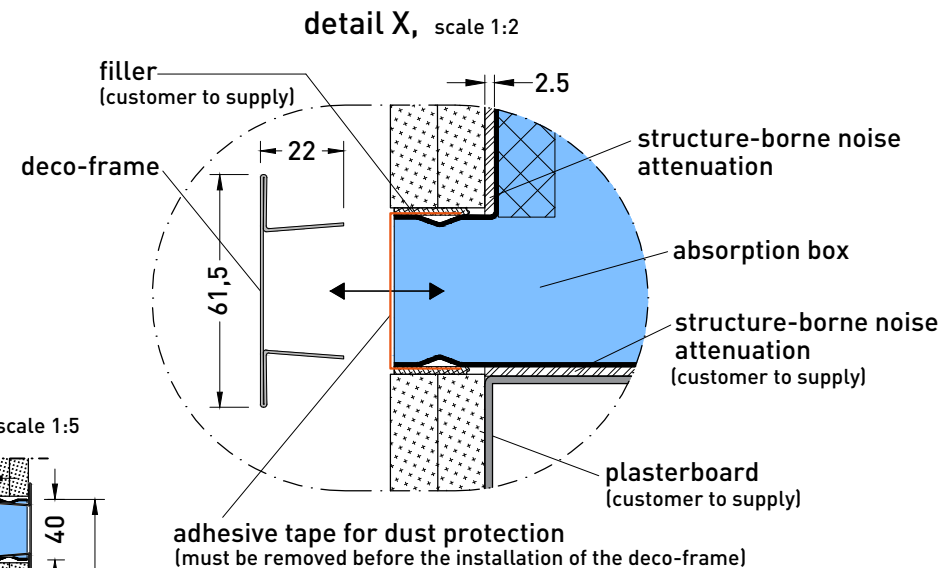
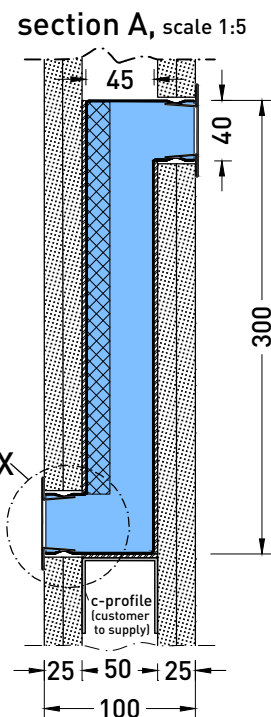
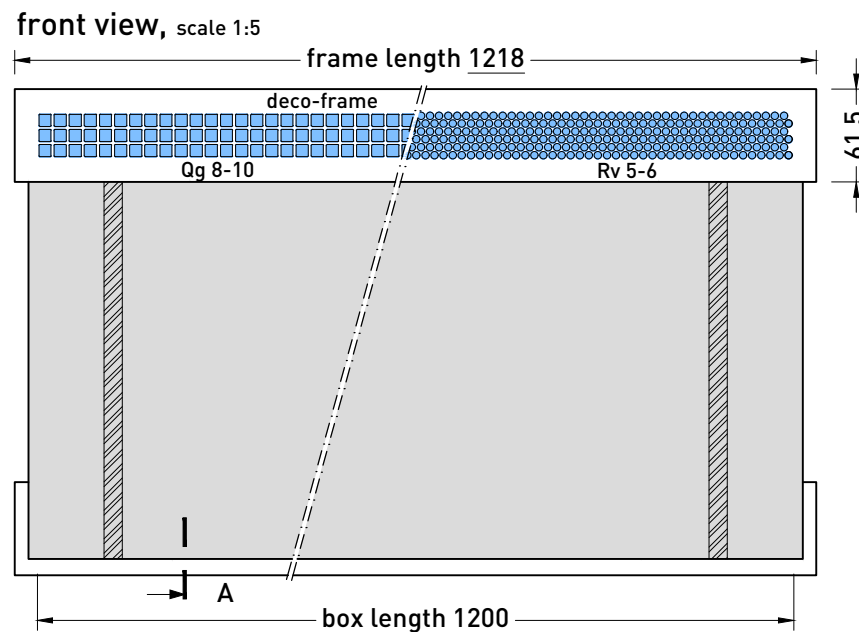
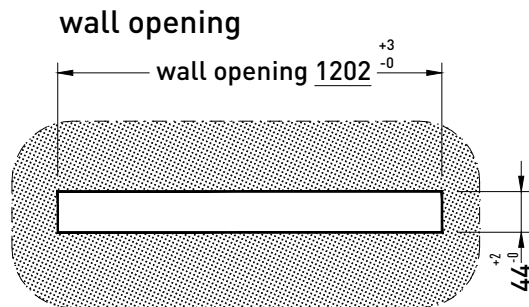
Installation note:

- The gap between the opening of the wall and the neck of the absorption box must not be closed with rigid materials. In order to avoid sound by-ways however, this crevice has to be closed with continuously flexible material.
- The provided dust protection has to be removed after the complete installation.

The deco-frame can be chosen between a square- (Qg 8-10) and a round perforation (Rv 5-6).

Transfer grille INDUSILENT

Type SR - for installation in a plasterboard wall with deco-frame - nominal length 1000mm



The deco-frame can be chosen between a square- (Qg 8-10) and a round perforation (Rv 5-6).

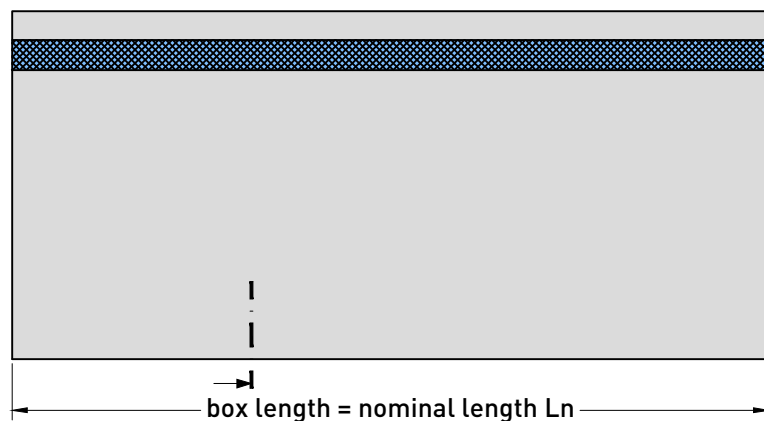
Installation note:

- The gap between the opening of the wall and the neck of the absorption box must not be closed with rigid materials. In order to avoid sound by-ways however, this crevice has to be closed with continuously flexible material.
- The provided dust protection has to be removed after the complete installation.

Transfer grille INDUSILENT

Type SR - for installation in a plasterboard wall with deco-frame - nominal length 1200mm

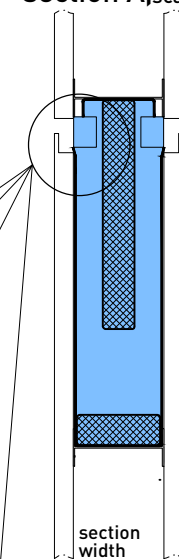
front view, scale 1:5



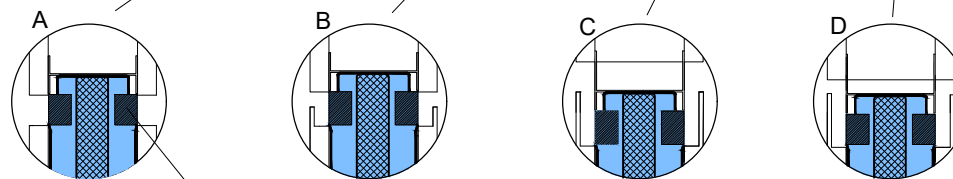
dimensions

nominal length L_n [mm]	500	800	1000	1200
box length [mm]	500	800	1000	1200

section A, scale 1:5



installation example



dust protection
must be removed before wall mounting

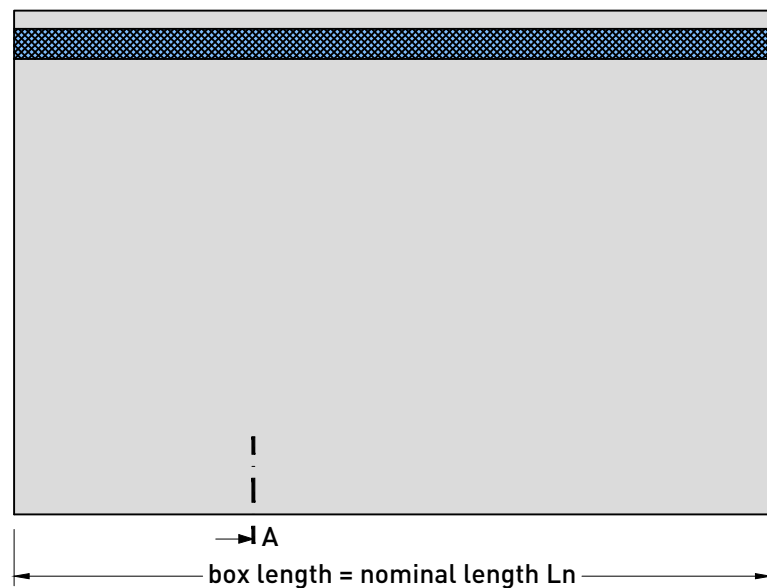
Installation note:

- The provided dust protection has to be removed after the complete installation.

Transfer grille INDUSILENT

Type TS - for installation in dividing walls and other wall constructions - height 230 mm

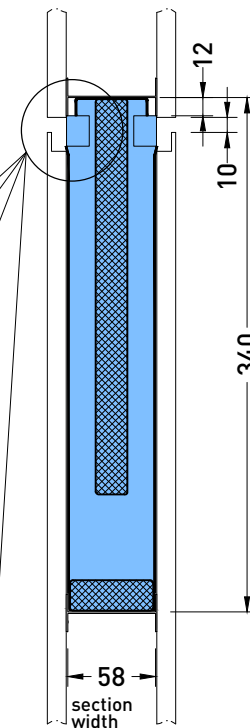
front view, scale 1:5



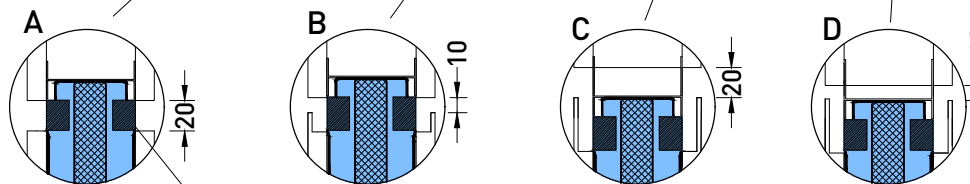
dimensions

nominal length L_n [mm]	500	800	1000	1200
box length [mm]	500	800	1000	1200

section A, scale 1:5



example for installation



dust protection
must be removed before the wall mounting

Installation note:

- The provided dust protection has to be removed after the complete installation

Transfer grille INDUSILENT

Type TS - for installation in dividing walls and other wall constructions - height 340 mm