



# Chilled Ceiling Panel INDUCOOL



Seit 1877

# Kiefer

Luft- und Klimatechnik

Neue Wege mit Luft

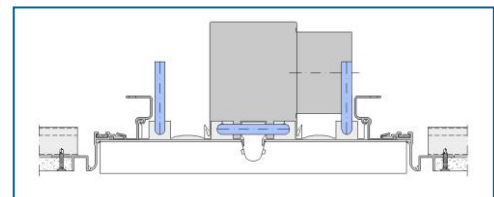
## Pressehaus Stuttgart

The architects Pfeiffer, Ellermann and Preckel have given a thorough facelift to this publishing house dating from the seventies and featuring nine storeys, a square floor plan and fair-faced concrete facades. Two separate entries have been merged into a single, open-plan main entrance with a spacious foyer, which harmoniously unites old and new. The reflective travertine floor and the elegant reception area, equipped with an innovative visitor guidance system, allow scope for light and air in equal measure.



Photo: Wilhelm Mierendorf

INDUCOOL elements with KL3 GK air-guide profiles for installation in plaster ceilings



### Function INDUCOOL

INDUCOOL cools with air and water. Most of the thermal energy is removed quickly and economically by cooling water. High-quality air diffusers ensure a high degree of comfort and optimum air distribution.

### System advantages

- Greater thermal comfort with low air velocity
- Chilled ceiling panels require only 5-10% of ceiling area
- Reduced energy costs by exploiting the cooling potential of outdoor air
- High cooling capacity, up to 500 W/m
- Integration of cooling panels into all common ceiling systems
- A full-surface cooling-water system is not required

<b>Building:</b>	Pressehaus Stuttgart
<b>Architects:</b>	Pfeiffer, Ellermann, Preckel Lüdinghausen
<b>Proprietor:</b>	Pressehaus Stuttgart Grundstücksverwaltung GmbH, Stuttgart
<b>Consultant, building services:</b>	AXIMA GmbH Stuttgart
<b>Ventilation system component:</b>	Chilled ceiling panel INDUCOOL
<b>Type of ceiling:</b>	Plasterboard ceilings
<b>Scope:</b>	2,500 m <sup>2</sup> conditioned area
<b>Active ceiling area:</b>	< 10 %
<b>Specific cooling load:</b>	50-125 W/m <sup>2</sup>

