



Photo © KTM Motohall GmbH



## James-Simon-Galerie, Berlin

At the heart of Berlin's Museum Island, a symbiosis between ambient climate and interior design was created.

## Linear diffuser INDUL - James-Simon-Galerie

### Pure white elegance – Chipperfield building for the Museumsinsel

In July 2019, ten years after its construction began, a new architectural masterpiece, the James-Simon-Galerie, at the heart of Berlin's Museumsinsel (Museum Island), opened its doors in the presence of the German Chancellor – as befits its status. The gallery is named after James Simon, probably the most important art patron of his time.

Dazzlingly elegant, contemporary and confident, this magnificent new building by leading architect David Chipperfield stands on the last piece of "holy ground" on Museum Island, the space once occupied by the Neuer Packhof, which was demolished in 1938. This multifunctional building will serve in future as the central entrance gallery. As well as an auditorium, café/restaurant, bookshop, cloakrooms and much needed space for temporary and special exhibitions, the three-storey James-Simon-Galerie also forms the new link to the existing buildings of the Neues Museum and the Pergamonmuseum.

The powerful architecture required masterful integration of the new contemporary multifunctional building into the existing historical ensemble. According to David Chipperfield, the slim new concrete columns are a reinterpretation of the colonnade promenade by architect Friedrich August Stüler, which connects the Neues Museum with the neighbouring Alte Nationalgalerie. The monumental outdoor staircase of the James-Simon-Galerie is a reference to Karl Friedrich Schinkel's staircase leading up to his Altes Museum.

#### **Symbiosis between ambient climate and interior design**

The interior design is impressive with its minimalist style featuring exposed concrete walls and high grade, sophisticated materials such as patinated bronze, sheets of Thassos marble and French walnut. On a floor area of 4600 square metres spread over three floors, the design plays artfully with different room heights, so that the visitors' experience of the space constantly changes.

The air flow path in the lower foyer of the first level is split into two different areas. Parallel to the staircase leading up to the bookshop, the INDUL AV 45 linear diffuser array is stylishly integrated into the elegant wooden wall. This ensures even air distribution without perceptible draughts and therefore optimum comfort for visitors and employees. For the air flow in the front foyer area, the INDULSNAP V45 wall air passage is embedded behind the service and reception desk of the visitor centre, invisible from the room, on top of the longitudinal wall panelling. The diffuser array is only interrupted in the media wall area. The wall structure itself serves as a supply air duct. The INDULSNAP air discharge unit, installed at an oblique angle, systematically feeds supply air into the room. In addition to the Kiefer ventilation system components integrated in the Neues Museum and the James-Simon-Galerie, we are proud to be able to help shape the symbiosis between ambient climate and interior design in another famous museum. Kiefer's experience is being called upon for a further assignment, this time for the general renovation of the Pergamonmuseum.



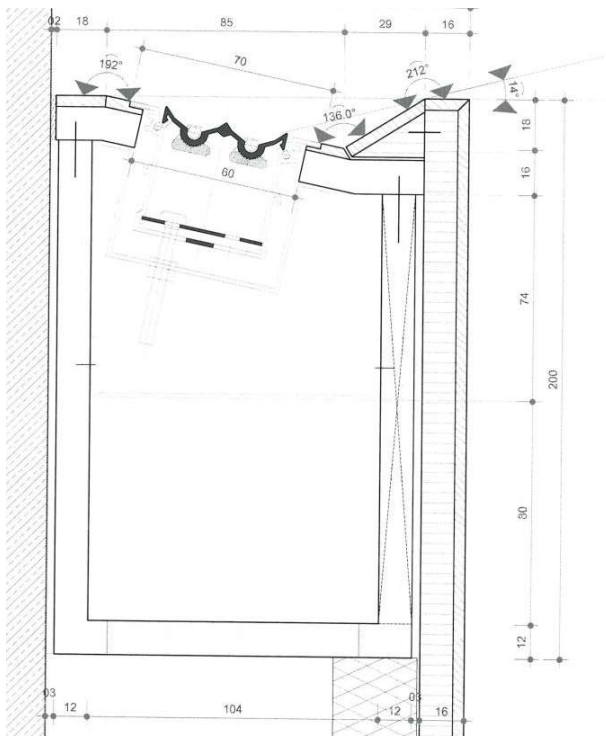
▲ Linear diffuser INDUL in the foyer and entrance area

Around three million art lovers flock to the gallery every year. The linear diffusers integrated in the wall ensure even air distribution with no perceptible draught.

<b>OBJECT:</b>	James-Simon-Galerie, Berlin
<b>BAUHERR:</b>	Bundesamt für Bauwesen und Raumordnung, Berlin
<b>PLANNING OFFICE:</b>	INROS LACKNER AG, Berlin
<b>ARCHITECTS:</b>	David Chipperfield Architects, Berlin
<b>PRODUCTS:</b>	INDUL AV45 Linear Diffuser embedded in the wall and INDULSNAP Wall Air Passage



▲ View of the reception counter of the visitor centre, with the INDULSNAP wall diffuser invisibly integrated into the wall, behind the counter.



◀ Drawing of INDULSNAP wall diffuser, embedded in the upper edge of the media wall behind the service desk or reception counter of the Visitor Centre.

## Function Linear Diffuser INDUL

INDUL linear diffusers allow very small installation widths from just 15 mm. These are available in a range of designs and meet the highest demands in terms of both ventilation comfort and attractive ceiling design for an unobtrusive installation in all types of ceilings. The supply air is divided into fine individual jets which distribute the supply air into the room at an angle of 45° alternately to the left and to the right. The result is an especially uniform air distribution with an optimal diffuse ambient air flow, and no noticeable draughts.

### Systemvorteile

- ▶ Completely draught-free air distribution
- ▶ Low diffuser widths, from 15 mm
- ▶ Unobtrusive installation in ceiling joints
- ▶ Light, clean ceilings due to fine-jet characteristics
- ▶ Simple, quick and clean installation in all ceiling systems
- ▶ Special installation kit for plaster ceilings

