

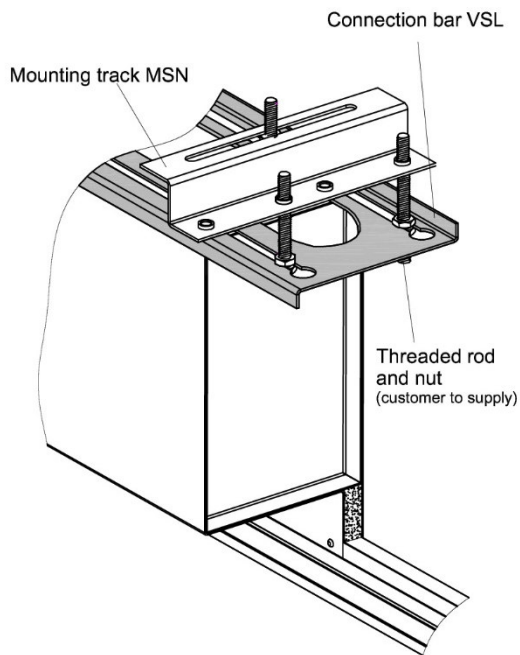
## Installation Instruction

Datei: Einbauhinweise D+E2001\_INDUL N

### Installation instruction

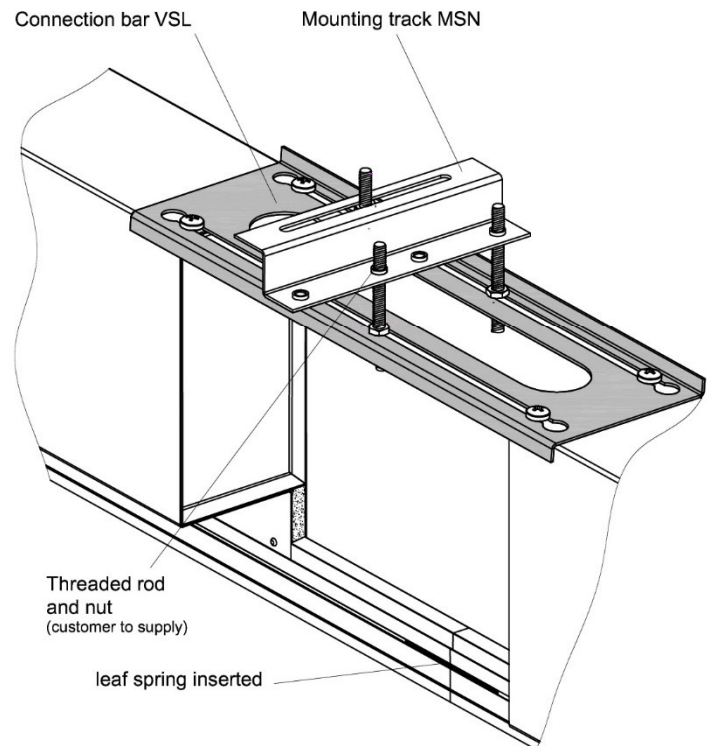
#### Single arrangement

with connection bar VSL

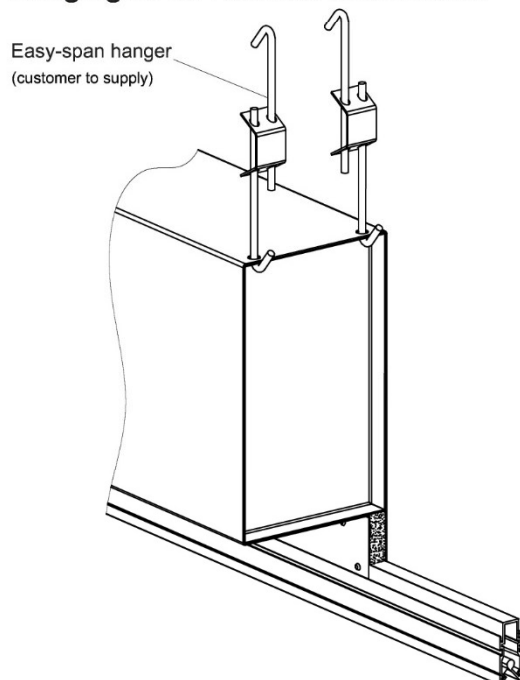


#### Band arrangement

with connection bar VSL



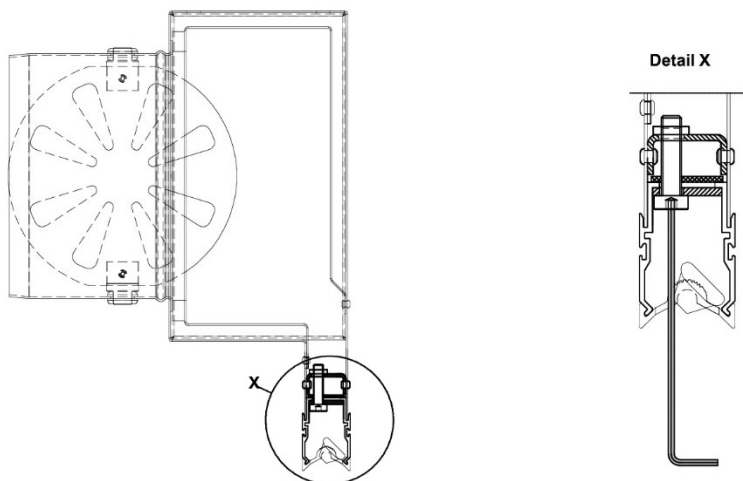
#### Hanging INDUL without accessoires



## Installation Instruction

### Installation instruction

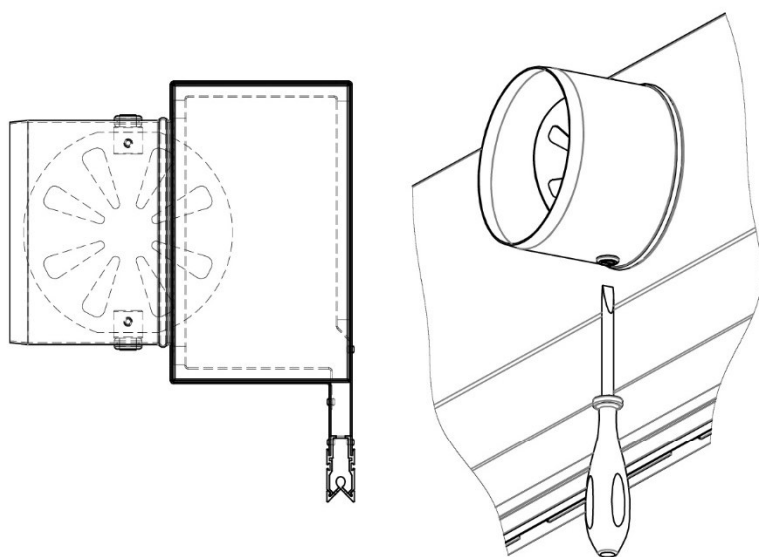
**INDUL V with releasable connections** between supporting profile and plenum box.



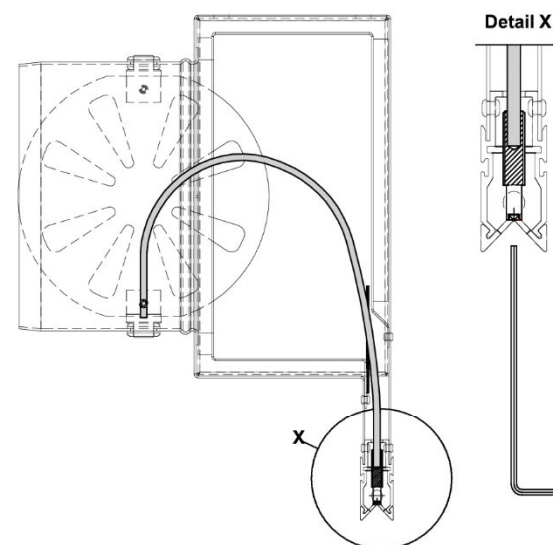
The INDUL AV24, AVI24, AV45 and AVI45 models can be supplied with a separable connection between the support profile and the plenum box, so that the plenum is cleanable according to VDI 6022. The separable connection is not possible in combination with integral or loose plaster brackets...NG.

### Butterfly damper

adjustable at socket



adjustable from room



**Note:**

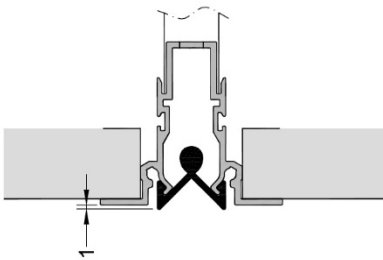
INDUL diffusers are supplied with the butterfly damper closed. Once installation has been completed all butterfly dampers must first be opened before carrying out system regulation.

## Installation Instruction

### Diffusers with integrated brackets

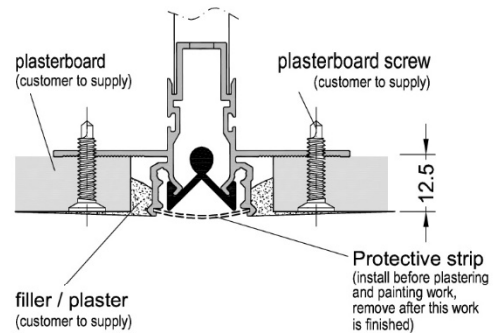
#### INDUL type AP and AV with integrated overlay bracket

Integrated overlay bracket type INDUL...NA  
Available for all types



#### INDUL type AP and AV with integrated plaster bracket

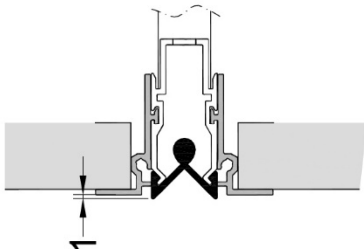
Integrated plaster bracket type INDUL...NG  
Available for all types



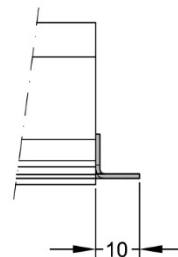
### Loose bracket for diffuser type Indul ...W-NA resp. W-NG

#### INDUL type AP and AV with loose overlay bracket

Loose overlay bracket type INDUL...W-NA  
Available for all types



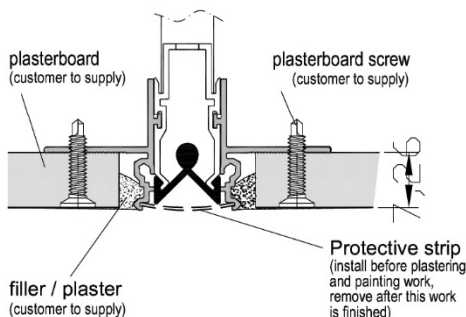
type E15-NA, E18-NA  
E24-NA, E45-NA



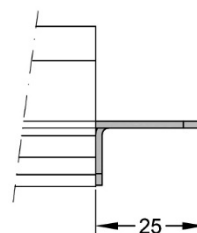
Frontal end bracket for  
integrated and  
loose overlay brackets (optional).

#### INDUL Type AP and AV with loose plaster bracket

Loose plaster bracket type INDUL...W-NG  
Available for all types



type E15-NG, E18-NG  
E24-NG, E45-NG



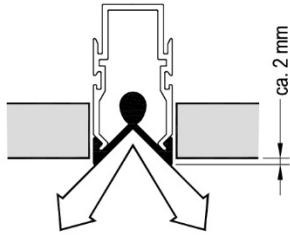
Frontal end bracket for  
integrated and  
loose plaster brackets (optional).

## Installation Instruction

### Installation Heights

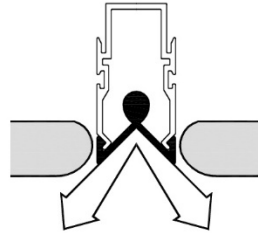
#### Correct

Ceiling plates with sharp edges

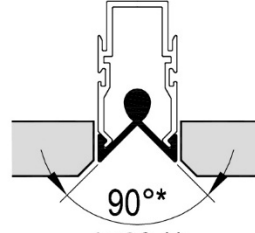


#### Acceptable

Panels with rounded edges



Ceiling plates  
with bevelled edges



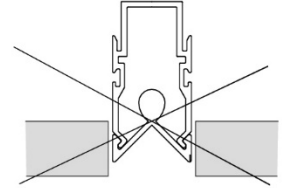
Flow deflection possible

90°\*  
150°\*\*

\* INDUL P...N  
\*\* INDUL V...N

#### Wrong

Flow deflection and dirt build-up



High room air velocities and  
dirt build-up

#### Installation information

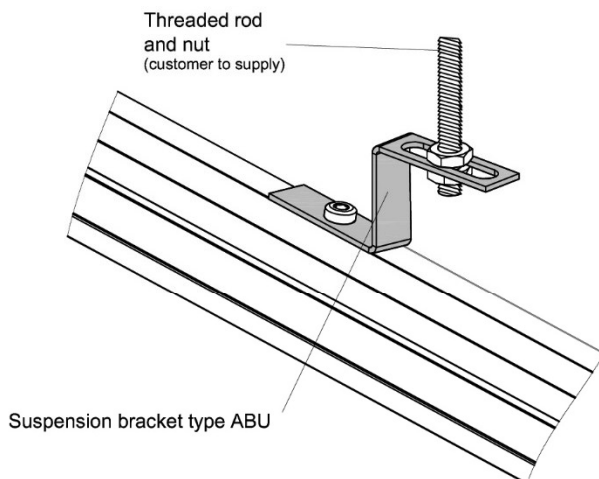
- It is essential to ensure an uninterrupted 90°/150° discharge.
- Optimum installation dimension: approx. 2 mm projection (see details above).
- For safety reasons, no pressure should be applied to the diffuser throat (for example, as a result of thermal-related changes to the length of the ceiling elements).
- INDUL air diffusers are built-in ceiling components. They are not a replacement for necessary static ceiling support structures. This applies regardless of whether you are using integrated or loose brackets.

## INDUL-Accessoires

### Dummy section installation

#### Suspension bracket type ABU

for the mounting of dummy sections, non-stamped



#### Suspension bracket type ABG

for the mounting of dummy sections, rear stamped

