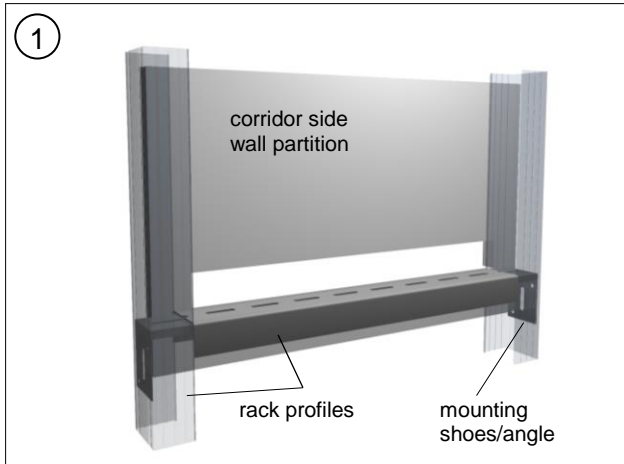
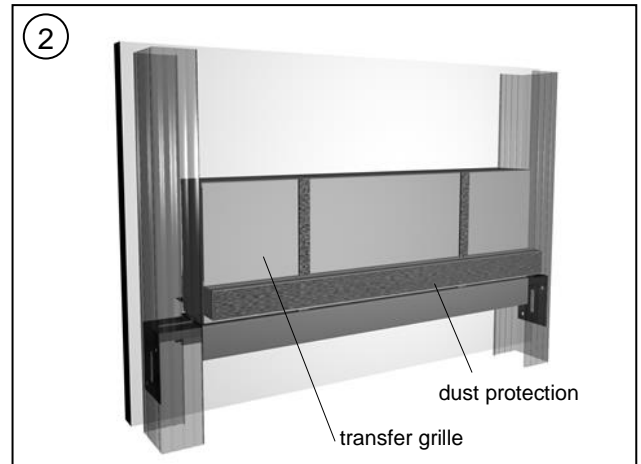


## Installation Instruction

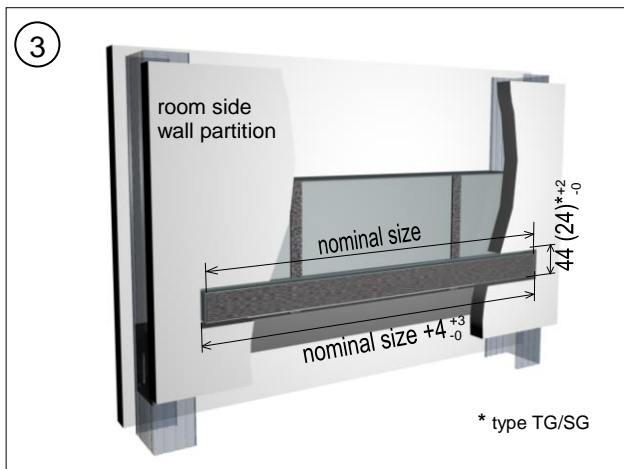
### Recommended mounting (picture: ex.type TR)



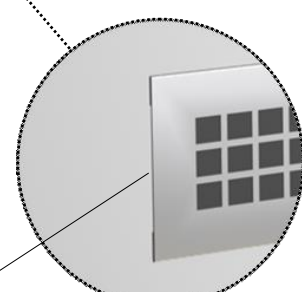
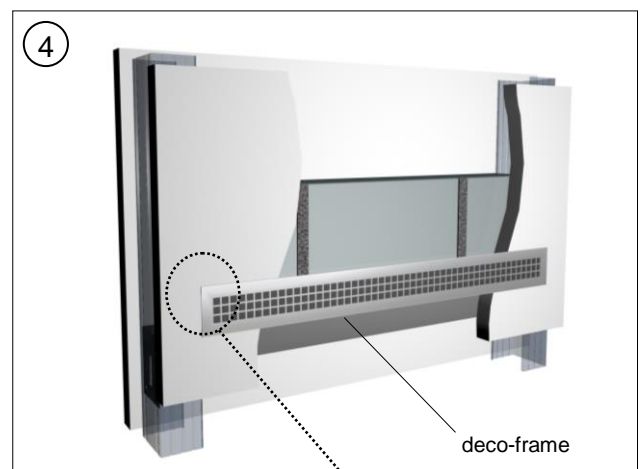
- Building of the stand construction
- Mounting of the corridor side wall partition with a cut-out for the transfer grille



- Mounting of the transfer grille at the stand construction



- Construction of the room side wall partition
- Provide cut-outs for the transfer grilles
- **Type...R+G:** The gap between the opening of the wall and the neck of the absorption box must not be closed with rigid materials. This crevice has to be closed with flexible material to avoid sound by-passes.
- **Type...R:** The adhesive tape for dust protection has to be removed just before the installation of the deco-frame.
- **Type...G:** The provided dust protection has to be removed after the complete installation.



Depended on the construction a little camber is possible

### For any questions please contact:

Kiefer Klimatechnik GmbH  
 Company address:  
 Heilbronnerstr. 380-388  
 D-70469 Stuttgart

☎: +49/711/8109-0  
 Fax: +49/711/8109-205  
 E-Mail: [info@kiefertklima.de](mailto:info@kiefertklima.de)  
 Web: [www.kiefertklima.de](http://www.kiefertklima.de)