



▲ INDULFLOOR can be used in a range of application areas in modern architecture, especially in office spaces.

FLOOR AIR DIFFUSER INDULFLOOR



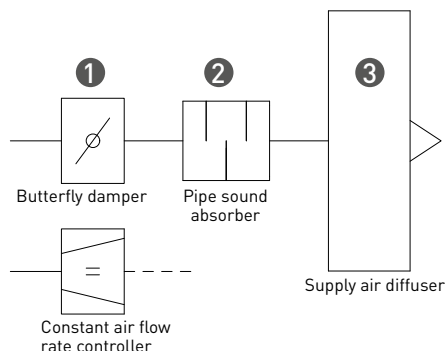
Three functions combined into a single floor air diffuser

The INDULFLOOR is a floor air diffuser with integrated sound absorber and innovative mechanism for air flow rate and discharge setting. The INDULFLOOR is perfect for integration into raised floors and can be installed along façades to save space.



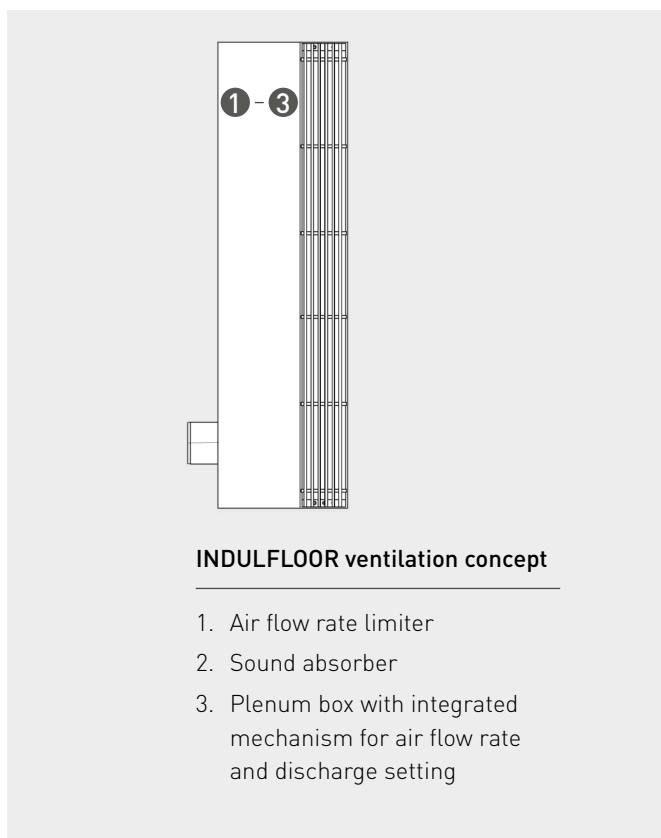
INDULFLOOR

Three functions combined into a single floor air diffuser



Ventilation diagram of commercially available floor air diffuser

1. Butterfly damper, air flow rate limiter or controller
2. Pipe sound absorber
3. Plenum box with outlet



INDULFLOOR ventilation concept

1. Air flow rate limiter
2. Sound absorber
3. Plenum box with integrated mechanism for air flow rate and discharge setting

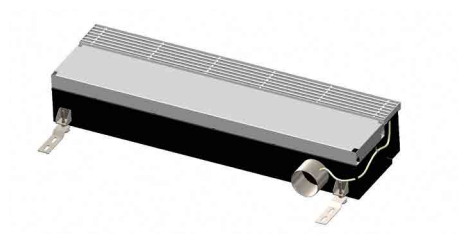
INSTALLATION SITUATION

The INDULFLOOR is installed directly onto the unfinished floor. Installation tolerances are easy to compensate for with the height-adjustable feet so that the diffuser can easily be aligned then secured to the floor with the impact-noise decoupled fixing tabs. The INDULFLOOR has a stable console to which the floor covering can be applied directly. The floor panels of the raised floor can be recessed in the area around

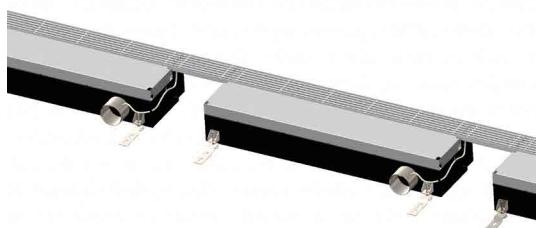
the INDULFLOOR, thereby reducing the overall installation height.

The INDULFLOOR can be installed as a single diffuser or as band arrangement. With the band arrangement, a connecting plate is installed between the active diffusers to which the linear grille spacer can then be fitted. This allows multiple INDULFLOOR units to join together as a visually continuous band.

Single element



Band arrangement



FUNCTION

INDULFLOOR comprises a housing with integrated silencer and mechanism for air flow rate and discharge setting, which can be adjusted from the room with the aid of a flow rate scale. The air diffuser has an asymmetrically positioned air connection socket and an accessible linear grille with support frame. The floor air diffuser has four height-adjustable feet for adjustment to installation tolerances. In order to create a defined and simple interface to the raised floor, the floor air diffuser is equipped with a console to which the floor covering can be applied directly. The height of the console is set according to the floor covering. A room-side pressure measurement nipple allows for pressure and air flow rate recording on site. The desired supply air flow rate can be read off from the performance curve with the measured pressure signal and the scale on the air diffuser and set on the diffuser. Parallel to air flow rate adjustment, an innovative mechanism automatically adjusts the air discharge, thereby optimising the ambient air flow.



ENERGY

Setting of the required air flow rate directly on the diffuser.



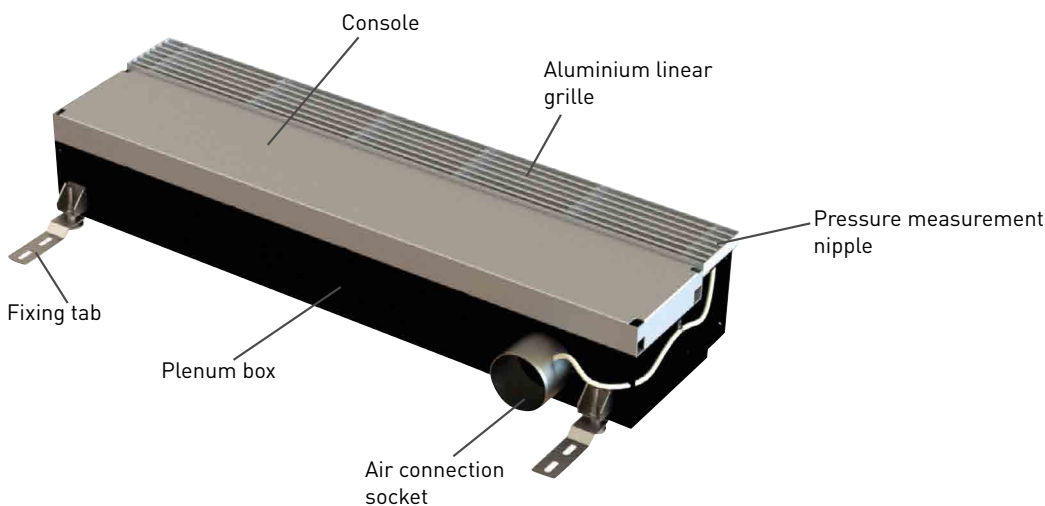
DESIGN

Elegant linear grille made from fine, anodised aluminium. Single or array arrangement also possible directly on the façade.



TECHNOLOGY

Compact read-to-use solution with integrated sound absorber and innovative mechanism for simultaneous air flow rate and discharge setting. Maximum indoor comfort thanks to optimal mixed/source air flow.



TECHNICAL DATA

Visible width of the linear grille	113 mm
Installed length	1100 mm
Total height incl. adjustable feet	193 - 243 mm
Custom dimensions	On request
Recommended line pressure range	Between 30 and 60 Pa
Temperature differential	Up to -6 K
Flow rate	30 - 160 m ³ /h

Further information can be found on www.kieferklima.de/en/indulfloor



www.kieferklima.de/en

Kiefer Klimatechnik GmbH
Heilbronner Straße 380 - 388
70469 Stuttgart

phone: +49 711 81 09-0
email: info@kieferklima.de